

## INSTALLATION INSTRUCTIONS

### DOMINATOR III Series SideSteps Part Number D360821 (B)

2011 Chevrolet Silverado/ GMC Sierra 2500HD, 3500HD Crew Cab P/U 2/4WD Long Bed (Diesel)

Do not attempt to install this product on any vehicle other than the one it is designed for and listed above!

### Parts List

<u>QTY</u>	<u>Part Description</u>	<u>QTY</u>	<u>Part Description</u>
1	8mm x 25mm Hex Bolt	29	3/8" Flat Washer
6	5/16" U-Nut	13	3/8" Hex Nut
6	5/16" x 1" Hex Bolt	1	C09120 Passenger Front Bracket
7	5/16" Flat Washer	2	C0922B Passenger Center & Rear Bracket
7	5/16" Lock Washer	3	C0921B Driver Front, Center & Rear Bracket
1	3/8" T-Bolt	1	Vinyl Gasket
16	3/8" x 1 1/4" Hex Bolt	1	D360821P Passenger Side Step
17	3/8" Lock Washer	1	D360821D Driver Side Step
4	3/8" Nut Plate		

### **Tool Required:**

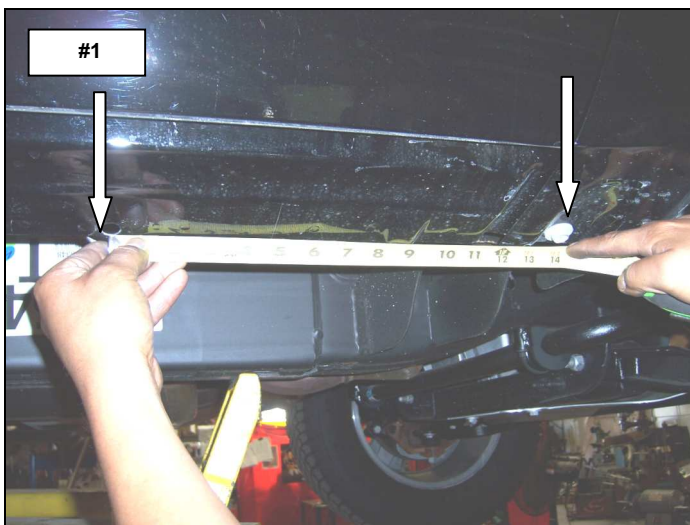
1/2", 9/16" & 13mm Socket  
1/2", 9/16" & 13mm Wrench  
Ratchet & Ratchet Extension

**Approximate installation time: 60min**

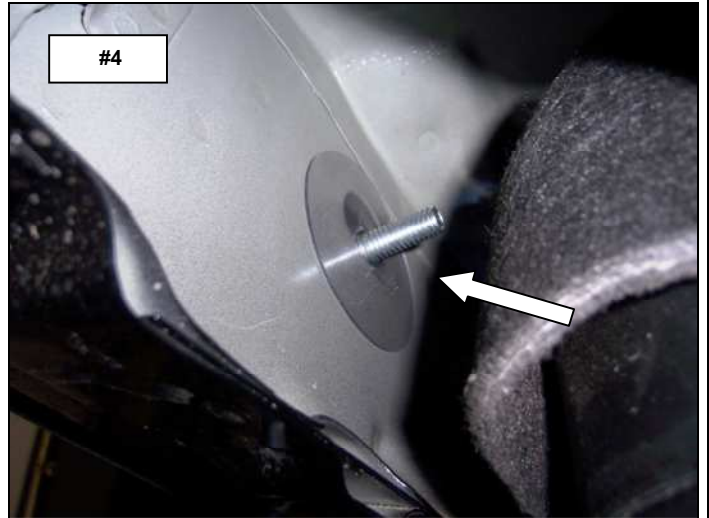
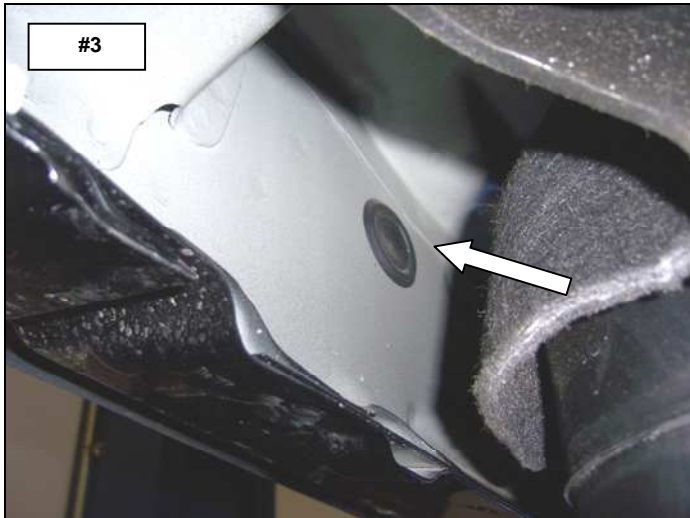
### Installation

Read the installation instructions completely and verify that all of the parts listed are accounted for.

**Step-1** This installation uses three mounting brackets per side. Begin by installing the passenger side front bracket. Measure from the front fender bolt rearward approximately 14", locate the hole in the body pinch mold and install (1) 5/16" U-Nut as shown. **Photo #1 & #2**



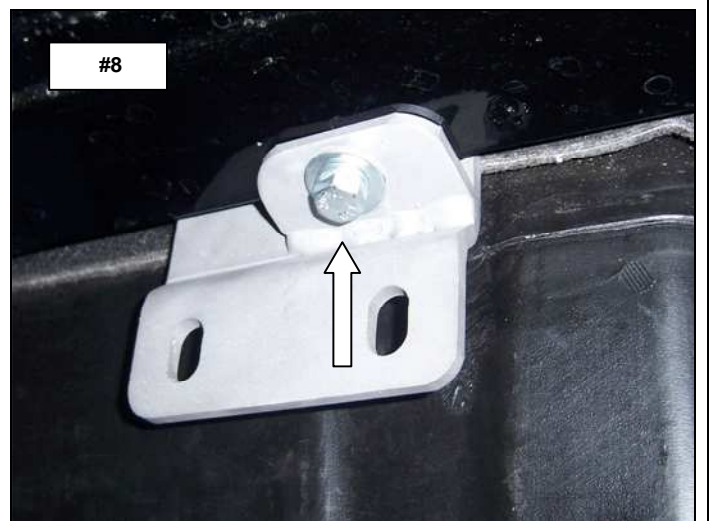
**Step-2** Locate in front of the urea tank the plastic plug in the body rocker panel. Remove the plug, install the vinyl gasket over the threads of the 3/8" T-Bolt and install T-Bolt in the rocker panel as shown. **Photo #3 & #4**



**Step-3** From the front of the urea tank, position the front mounting bracket between the tank and the body pinch mold. Slide the bracket rearward and align the holes in the bracket with the T-Bolt and U-Nut. **Photo #5 & #6**

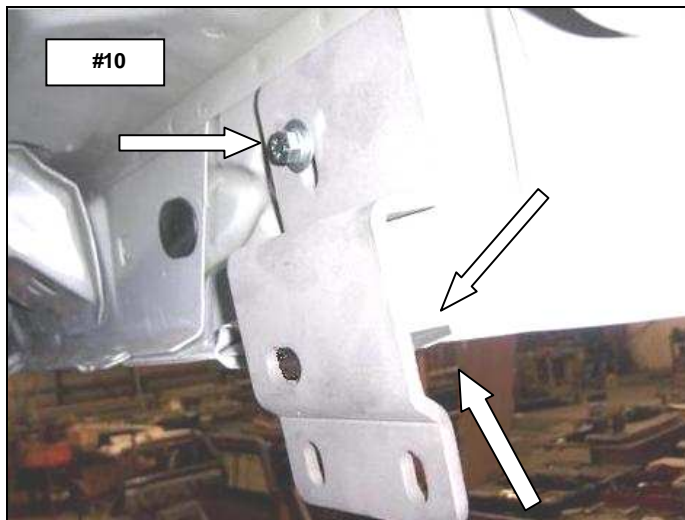
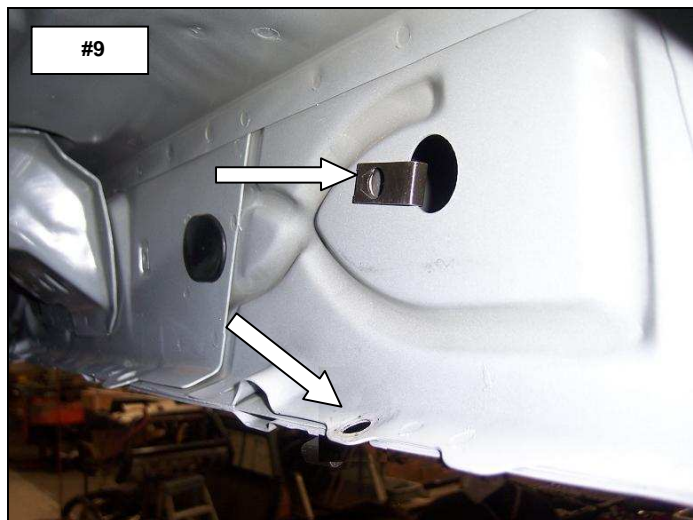


**Step-4** Position the obround hole in the front of the bracket over the T-Bolt and install (1) 3/8" flat washer, (1) 3/8" lock washer and (1) 3/8" hex nut. Position the flange of the bracket on the bottom of the pinch mold and align the obround hole with the U-Nut and install (1) 5/16" flat washer, (1) 5/16" lock washer and (1) 5/16" x 1" hex bolt. Leave the nut and bolt loose for final adjustment. **Photo #7 & #8**



**Step-5** Passenger side Center bracket installation.

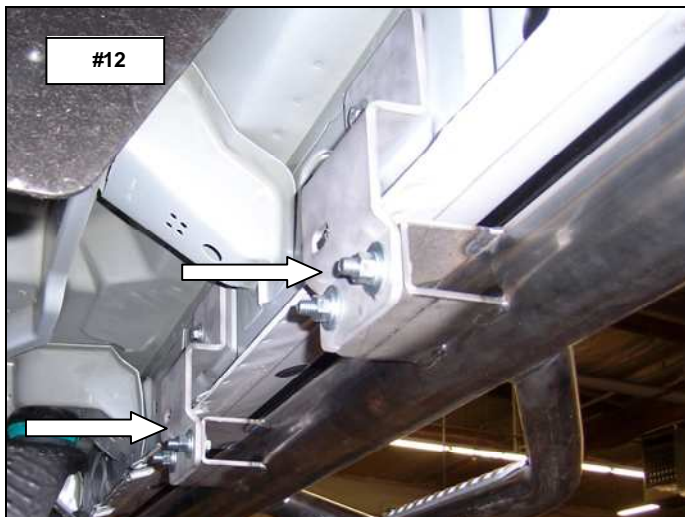
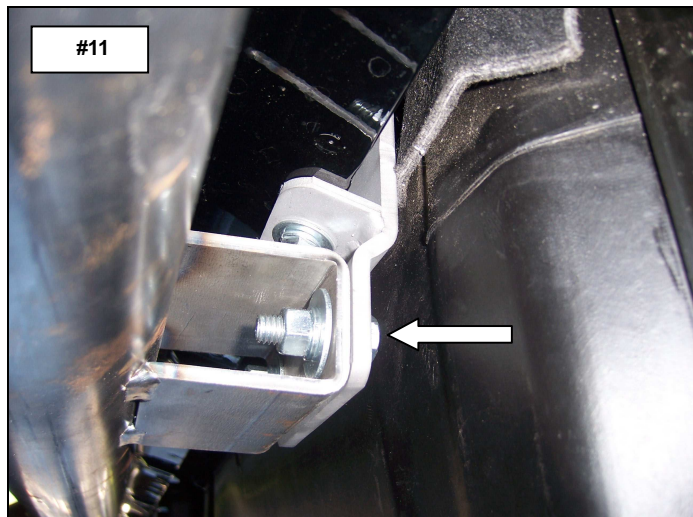
Measure from the front fender bolt rearward approximately 58 7/8" and locate the hole in the body pinch mold and the plastic plug in the rocker panel. Remove the plastic plug from the rocker panel and install (1) 5/16" U-Nut in the rocker panel. Attach one of the C0922B brackets to the rocker panel using (1) 5/16" x 1" hex bolt, (1) 5/16" lock washer, (1) 5/16" flat washer and the flange of the bracket to the bottom of the pinch mold using the (1) 3/8" x 1 1/4" hex bolt, (1) 3/8" lock washer, (1) 3/8" flat washer and (1) 3/8" nut plate. Leave the bolts loose for final adjustment. **Photo #9 & #10**



**Step-6** Passenger side rear bracket installation.

Measure from the front fender bolt rearward approximately 75 1/8" and repeat step 5 to install the remaining C0922B bracket.

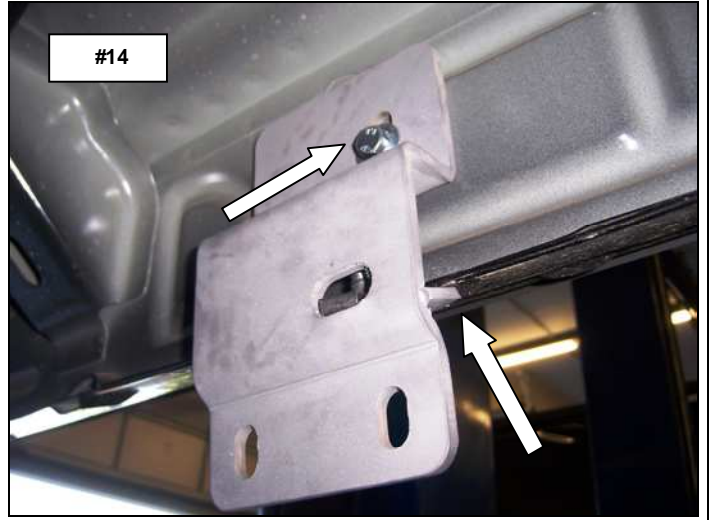
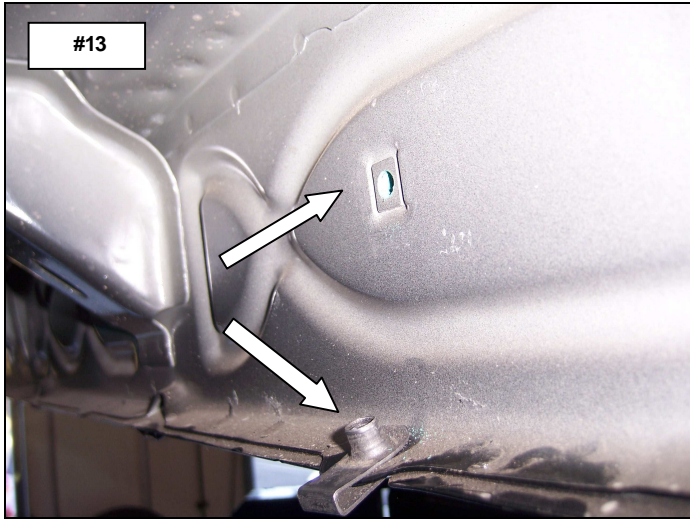
**Step-7** Attach the passenger side step to the front bracket **Photo #11** and to the center and rear bracket **Photo#12** using (2) 3/8" x 1 1/4" hex bolts, (4) 3/8" flat washers, (2) 3/8" lock washers and (2) 3/8" hex nuts for each bracket.



**Step-8** Align the side step with the vehicle and tighten all nuts and bolts.

**Step-9** Driver side front bracket installation.

Measure rearward from the front fender bolt approximately 14" and locate the hole in the body pinch mold and the 8mm threaded insert spot welded in the rocker panel. install a 5/16" U-Nut in the pinch mold and attach one of the C0921B brackets to the rocker panel using (1) 8mm x 25mm hex bolt, (1) 5/16" lock washer and (1) 5/16" flat washer and to the pinch mold using the (1) 5/16" x 1" hex bolt, (1) 5/16" lock washer and (1) 5/16" flat washer. Leave the bolts loose for final adjustment. **Photo #13 & #14**



**Step-10** Driver side center and rear brackets.

Repeat step 5, 6 & 7 to install the driver side center bracket, rear bracket and side step. Align the side step with the vehicle and tighten all nuts and bolts.

**Remember to check and retighten all nuts and bolts periodically.**



**Please do not return this product to place of purchase.**

**If you have defective, missing or damaged parts or need assistance, please contact *Go Rhino Products* for fast, friendly customer service at: 1-800-731-0425 or email: [info@gorhino.com](mailto:info@gorhino.com)**