



DOMINATOR III SideSteps **WHEEL - TO - WHEEL**

ASSEMBLY & INSTALLATION INSTRUCTIONS

PART NO. D36127 09-10 DODGE RAM 1500 QUAD CAB P/U 4DR 2/4WD

Do not attempt to install this product on any vehicle other than the one it is designed for and listed above!

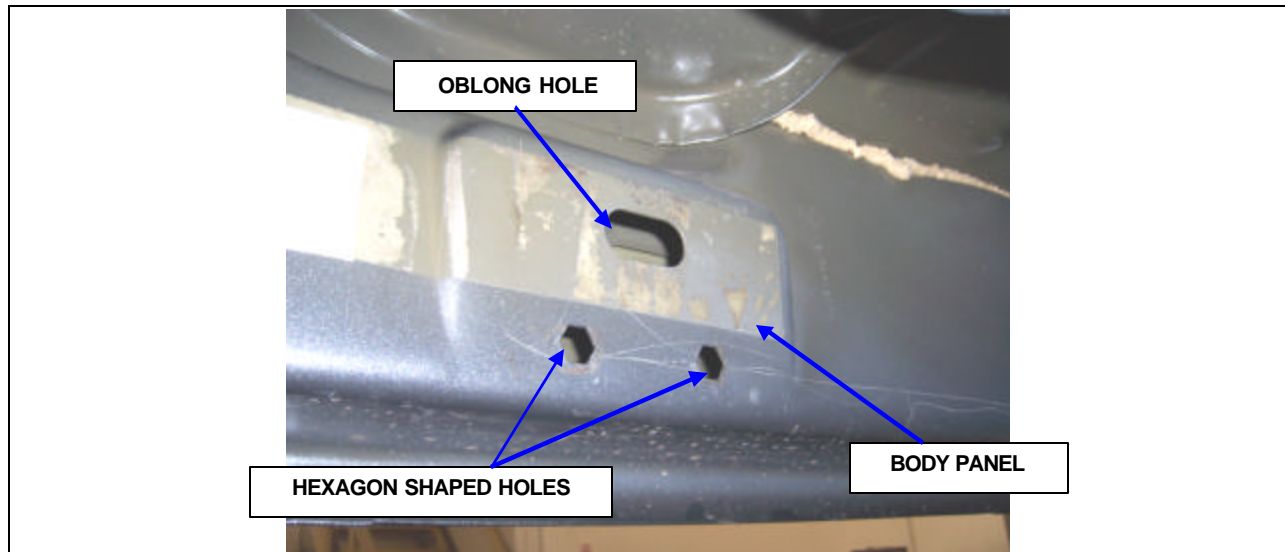
REV. 02/10

PACKING LIST

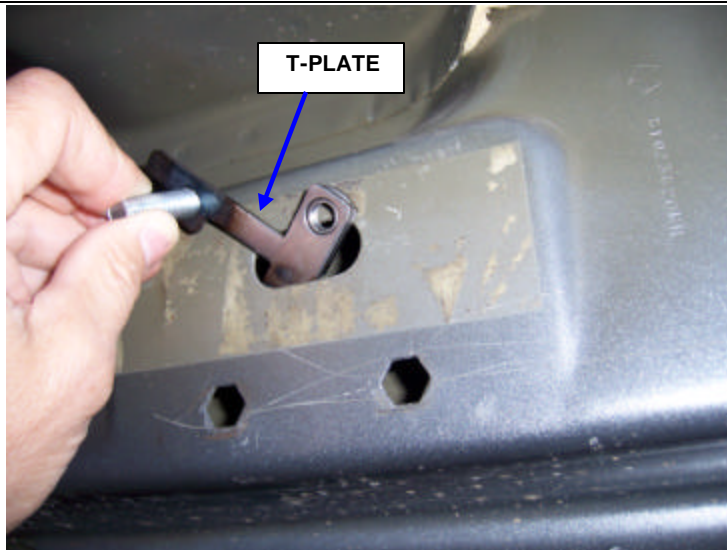
<u>QTY</u>	<u>PARTS DESCRIPTION</u>	<u>QTY</u>	<u>PARTS DESCRIPTION</u>
24	3/8" X 1 1/4" HEX BOLTS	3	D07 SIDE STEP MOUNTING BRACKETS SET
42	3/8" FLAT WASHERS	1	347FP FRONT PASSENGER SIDE STEP SECTION
30	3/8" LOCK WASHERS	1	347RP REAR PASSENGER SIDE STEP SECTION
18	3/8" HEX NUTS	1	347FD FRONT DRIVER SIDE STEP SECTION
6	4105TP T-PLATE	1	347RD REAR DRIVER SIDE STEP SECTION
6	VINYL GASKETS		

INSTALLATION INSTRUCTIONS

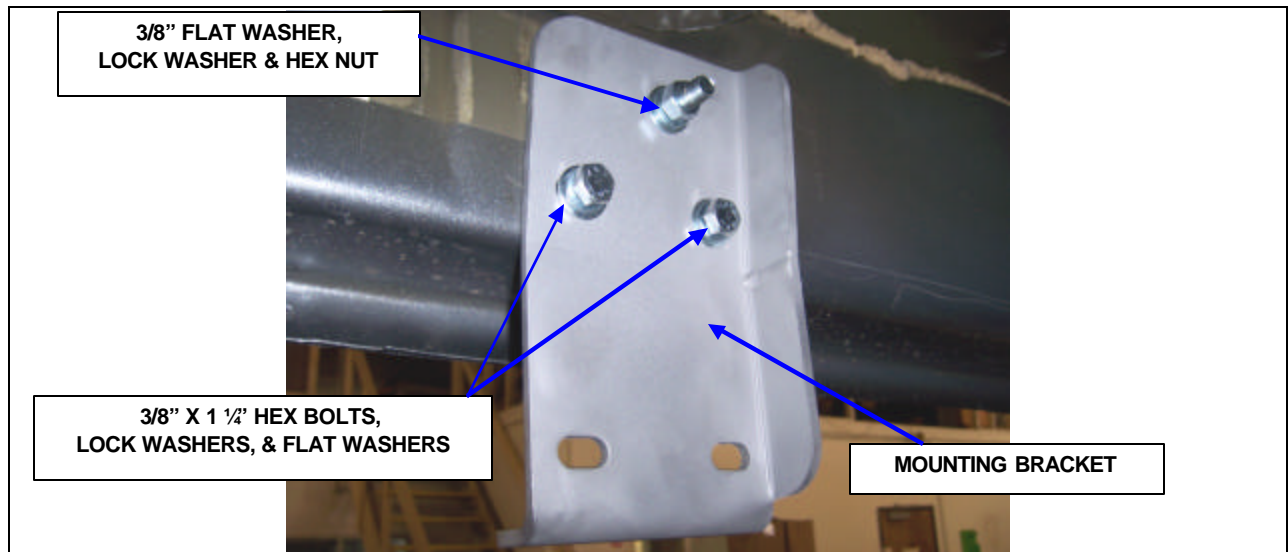
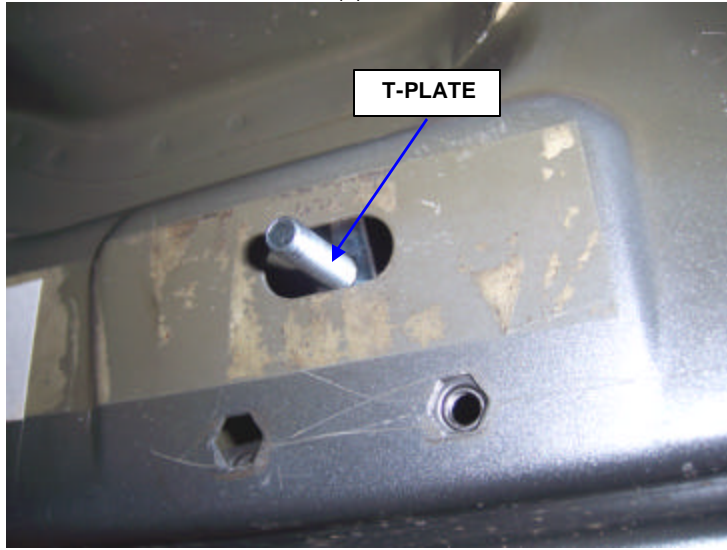
READ THE INSTRUCTIONS COMPLETELY BEFORE YOU BEGIN THE INSTALLATION



STEP 1. THIS INSTALLATION USES (3) MOUNTING BRACKETS PER SIDE. BEGIN BY INSTALLING THE PASSENGER SIDE FRONT BRACKET. LOCATE THE (2) HEXAGON SHAPED HOLES IN THE UNDERSIDE OF THE BODY PANEL AT THE FRONT OF THE CAB AND REMOVE THE TAPE COVERING THE OBLONG HOLE.



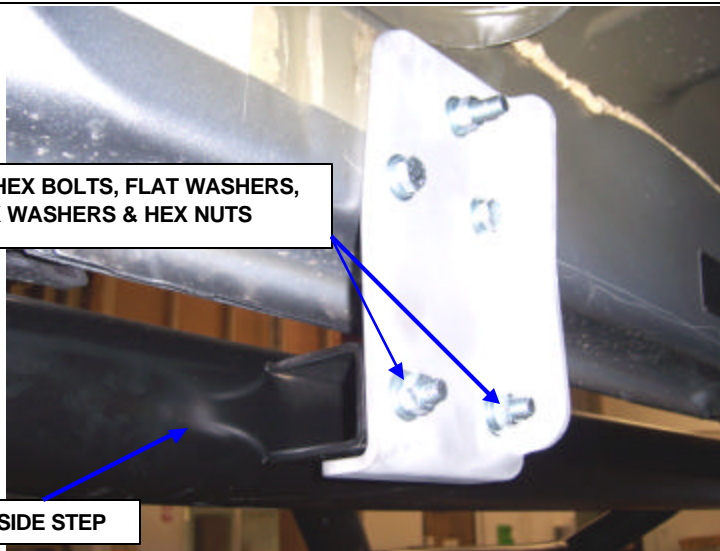
STEP 2. INSERT (1) OF THE T-PLATES THROUGH THE OBLONG HOLE IN THE BODY PANEL AND POSITION THE PLATE INSIDE THE PANEL AS SHOWN. PLACE (1) VINYL GASKET TO THE T-PLATE.



STEP 3. ATTACH ONE OF THE MOUNTING BRACKETS TO THE BODY PANEL USING THE T-PLATE (2) 3/8" X 1 1/4" HEX BOLTS, (3) 3/8" F LAT WASHERS, (3) 3/8" LOCK WASHERS AND (1) 3/8" HEX NUT. HAND TIGHTEN.



STEP 4. REPEAT THE ABOVE PROCEDURE TO INSTALL THE CENTER AND REAR MOUNTING BRACKETS.



**3/8" X 1 1/4" HEX BOLTS, FLAT WASHERS,
LOCK WASHERS & HEX NUTS**

PASSENGER SIDE STEP

STEP 5. ATTACH THE PASSENGER SIDE STEP TO THE MOUNTING BRACKETS USING (2) 3/8" X 1 1/4" HE X BOLTS, (4) FLAT WASHERS, (2) LOCK WASHERS AND (2) HEX NUTS FOR EACH BRACKET.



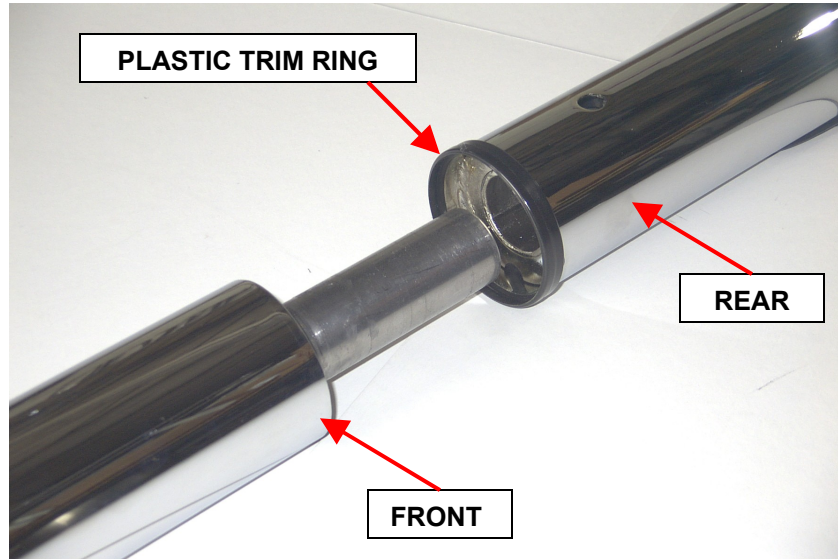
STEP 6. ALIGN THE SIDE STEP WITH THE VEHICLE AND TIGHTEN ALL MOUNTING BRACKET AND SIDE STEP NUTS AND BOLTS. REPEAT THE ABOVE PROCEDURE TO INSTALL THE DRIVER SIDE BRACKETS AND SIDE STEP.

SIDE BAR WHEEL TO WHEEL

ASSEMBLY INSTRUCTIONS

QTY	PARTS DESCRIPTION
2	PLASTIC PLUGS
2	3/8" X 3/4" SOCKET SET SCREWS
2	PLASTIC TRIM RINGS

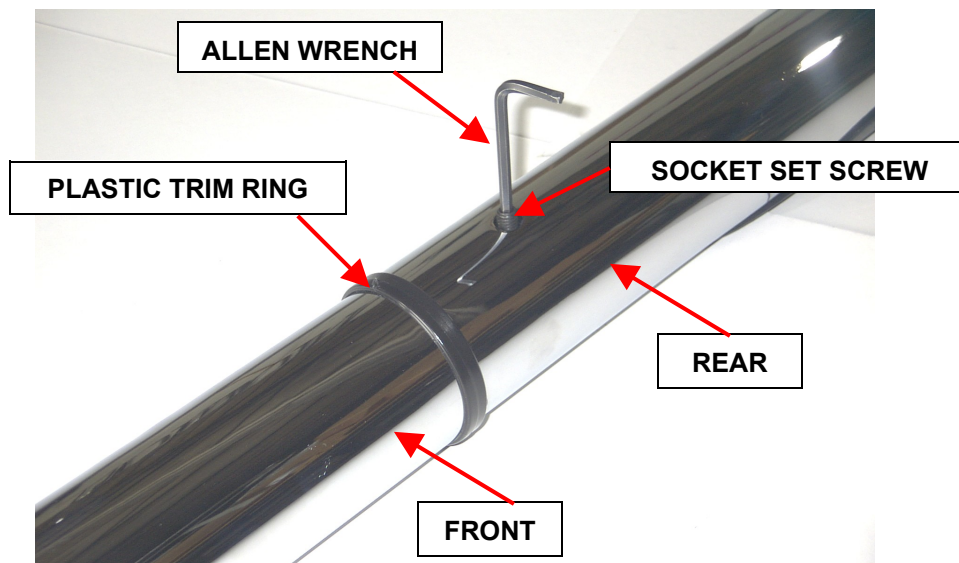
STEP 1. BEGIN BY LAYING OUT THE DRIVER SIDE FRONT AND REAR SIDESTEP SECTIONS ON A PROTECTIVE SURFACE WITH THE STEP PAD SIDE DOWN.



STEP 2. INSTALL THE PLASTIC TRIM RING ON THE REAR SECTION AND INSERT THE FRONT SECTION INTO THE REAR SECTION.

STEP 3. POSITION THE SIDESTEP SECTIONS AGAINST THE PLASTIC TRIM RING.

STEP 4. ALIGN THE FRONT AND REAR STEP HOOPS AND SECURE THE ASSEMBLY USING (1) SOCKET SET SCREW.



STEP 5. INSTALL THE PLASTIC PLUG TO CONSEAL THE SET SCREW.

REPEAT THE ABOVE STEPS TO ASSEMBLE THE PASSENGER SIDE.

FODI7.003.I