

## INSTALLATION INSTRUCTIONS

DOMINATOR III SERIES SIDE STEPS PART NUMBER D36148/D36149 (B-PS)  
2010 DODGE RAM 2500HD, 3500HD CREW CAB P/U 4DR 2/4WD

**Do not attempt to install this product on any vehicle other than the one it is designed for and listed above!**

### PARTS LIST

<u>QTY</u>	<u>PART DESCRIPTION</u>	<u>QTY</u>	<u>PART DESCRIPTION</u>
26	3/8" X 1 1/4" HEX BOLTS	1	DRIVER SIDE STEP FRONT SECTION
48	3/8" FLAT WASHERS	1	DRIVER SIDE STEP REAR SECTION
34	3/8" LOCK WASHERS	3	D07 DRIVER BRACKETS
22	3/8" HEX NUTS	1	372244CA DRIVER REAR AUXILIARY BRACKET
8	VINYL GASKETS	1	PASSENGER SIDE STEP FRONT SECTION
2	3/8" T-BOLT	1	PASSENGER SIDE STEP REAR SECTION
6	3/8" T-PLATE	3	D07 PASSENGER BRACKETS
		1	372244CA PASSENGER REAR AUXILIARY BRACKET

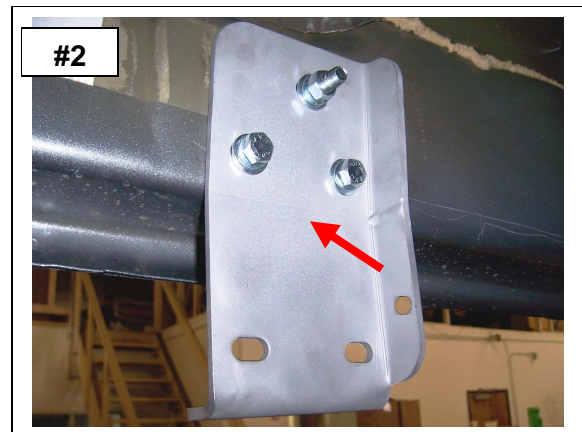
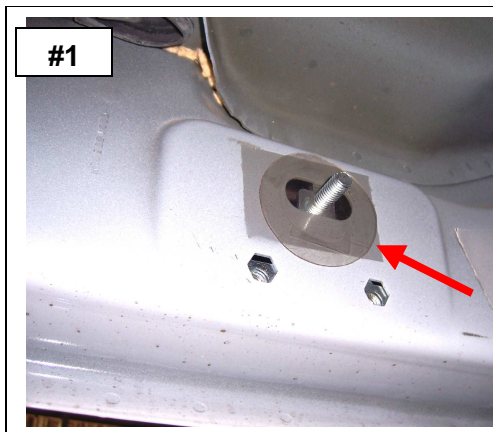
### INSTALLATION INSTRUCTIONS

**READ THE INSTRUCTIONS COMPLETELY BEFORE YOU BEGIN THE  
INSTALLATION**

**STEP-1** BEGIN THE INSTALLATION BY INSTALLING THE DRIVER SIDE BRACKETS.

LOCATE THE (2) HEXAGON SHAPED HOLES IN THE BODY PANEL AT THE FRONT OF THE CAB AND REMOVE THE TAPE COVERING THE OBLONG HOLE. INSTALL (1) 3/8" T-PLATE IN THE OBLONG HOLE AND INSTALL A VINYL GASKET OVER THE THREADS TO PREVENT THE T-PLATE FROM FALLING INTO THE BODY. **PHOTO #1**

**STEP-2** ATTACH ONE OF THE D07D BRACKETS TO THE BODY PANEL USING THE T-PLATE (2) 3/8" X 1 1/4" HEX BOLTS, (3) 3/8" FLAT WASHERS, (3) 3/8" LOCK WASHERS AND (1) 3/8" HEX NUT. HAND TIGHTEN. **PHOTO #2**



**STEP-3** LOCATE THE HEXAGON SHAPED HOLES IN THE BODY PANEL AT THE CENTER OF THE CAB AND REPEAT THE ABOVE STEPS TO INSTALL ONE OF THE D07D BRACKETS.

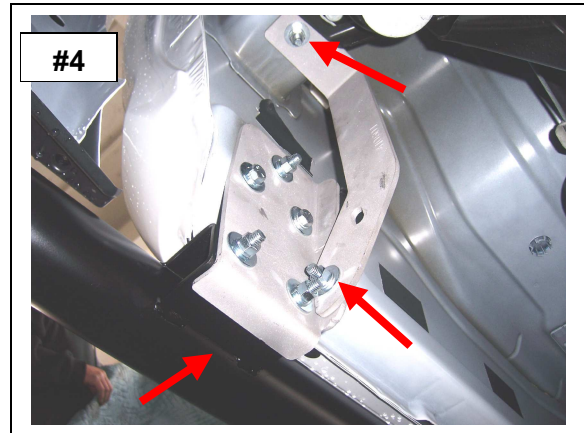
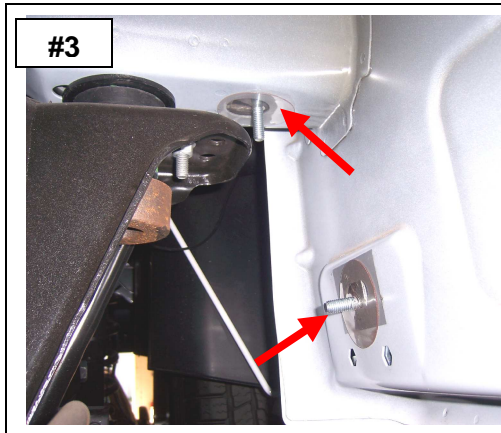
**STEP-4** LOCATE THE SQUARE HOLE IN THE UNDERSIDE OF THE BODY AND (2) HEXAGON SHAPED HOLES IN THE BODY PANEL AT THE REAR OF THE CAB.

REMOVE THE TAPE COVERING THE OBLONG HOLE AND INSTALL (1) 3/8" T-PLATE IN THE OBLONG HOLE AND (1) 3/8" T-BOLT IN THE SQUARE HOLE. INSTALL VINYL GASKETS OVER THE THREADS. **PHOTO #3**

**STEP-5** ATTACH THE REMAINING D07D BRACKET TO THE BODY PANEL USING THE T-PLATE (2) 3/8" X 1 1/4" HEX BOLTS, (3) 3/8" FLAT WASHERS, (3) 3/8" LOCK WASHERS AND (1) 3/8" HEX NUT. HAND TIGHTEN.

ATTACH THE REAR AUXILIARY BRACKET TO THE UNDERSIDE OF THE BODY USING THE T-BOLT, (1) 3/8" FLAT WASHER, (1) 3/8" LOCK WASHER, (1) 3/8" HEX NUT AND TO THE D07D BRACKET USING (1) 3/8" X 1 1/4" HEX BOLTS, (1) 3/8" FLAT WASHERS, (1) 3/8" LOCK WASHER AND (1) 3/8" HEX NUTS. HAND TIGHTEN.

ATTACH THE DRIVER SIDE STEP TO EACH BRACKET USING (2) 3/8" X 1 1/4" HEX BOLTS, (4) 3/8" FLAT WASHER, (2) 3/8" LOCK WASHERS AND (2) 3/8" HEX NUTS. **PHOTO #4**



**STEP-6** ALIGN THE SIDE STEP WITH THE VEHICLE AND TIGHTEN ALL BRACKETS AND SIDE STEP NUTS AND BOLTS.

REPEAT THE ABOVE STEPS TO INSTALL THE PASSENGER SIDE BRACKETS AND SIDE STEP.



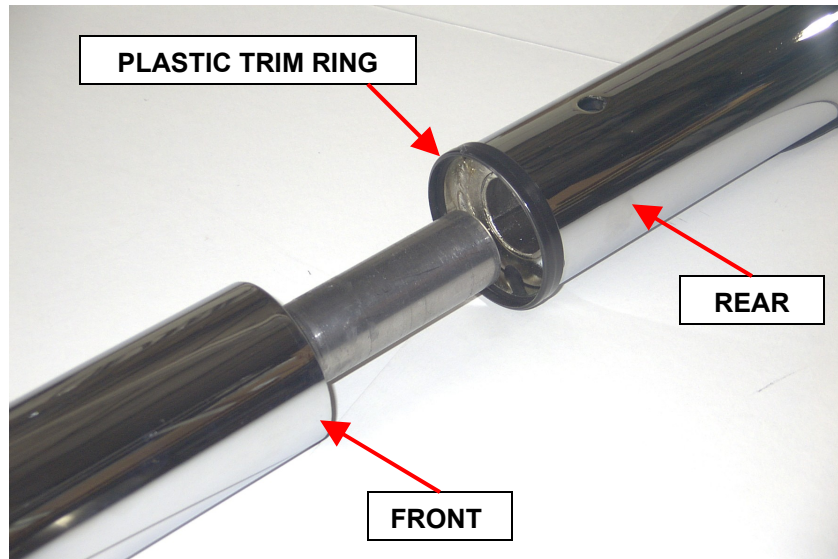
**FOR TECHNICAL OR WARRANTY INFORMATION CALL:  
TOLL FREE (888)427-4466 FAX (714)672-0278  
GO RHINO! Products® 591 W. Apollo St. Brea, CA 92821**

# DOMINATOR III SideSteps WHEEL - TO - WHEEL

## ASSEMBLY INSTRUCTIONS

QTY	PARTS DESCRIPTION
2	PLASTIC PLUGS
2	3/8" X 3/4" SOCKET SET SCREWS
2	PLASTIC TRIM RINGS

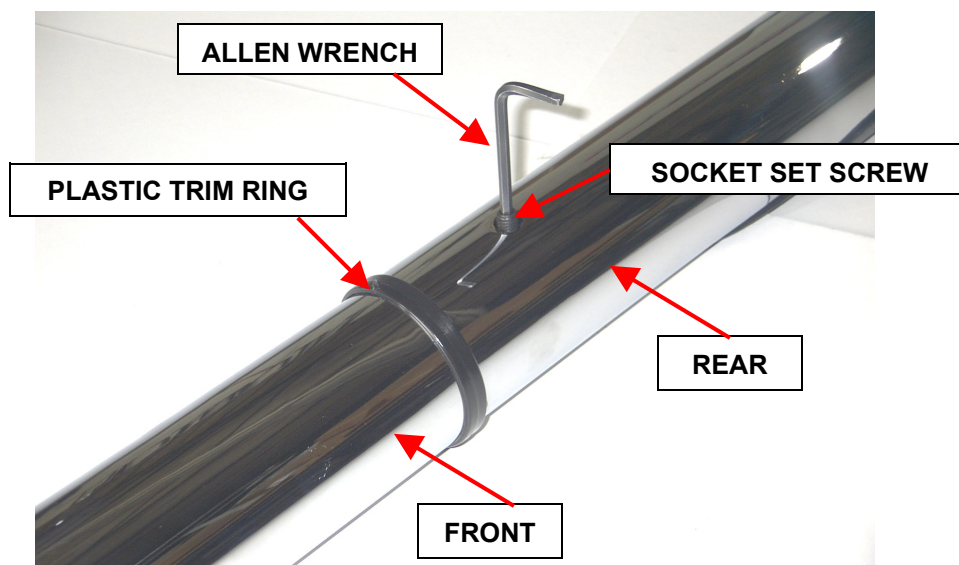
**STEP 1.** BEGIN BY LAYING OUT THE DRIVER SIDE FRONT AND REAR SIDESTEP SECTIONS ON A PROTECTIVE SURFACE WITH THE STEP PAD SIDE DOWN.



**STEP 2.** INSTALL THE PLASTIC TRIM RING ON THE REAR SECTION AND INSERT THE FRONT SECTION INTO THE REAR SECTION.

**STEP 3.** POSITION THE SIDESTEP SECTIONS AGAINST THE PLASTIC TRIM RING.

**STEP 4.** ALIGN THE FRONT AND REAR STEP HOOPS AND SECURE THE ASSEMBLY USING (1) SOCKET SET SCREW.



**STEP 5.** INSTALL THE PLASTIC PLUG TO CONSEAL THE SET SCREW.

REPEAT THE ABOVE STEPS TO ASSEMBLE THE PASSENGER SIDE.