

Installation Instructions

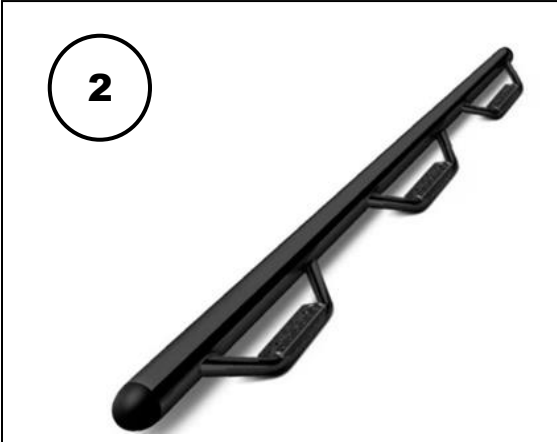
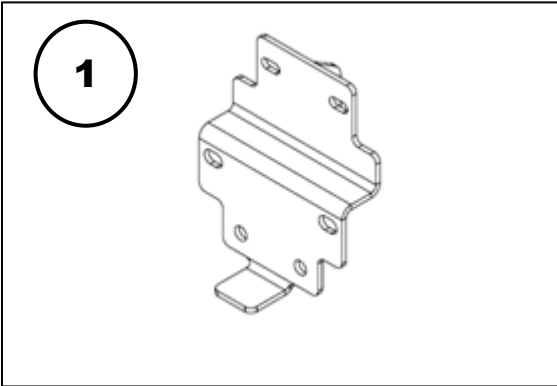
Dominador D3 Side Steps Part # D362581 (T-PS)

2015-2016 Ford F-150 Super Cab

Do not attempt to install this product on any vehicle other than the one listed above!

Parts List

No.	Qty.	Part #	Description	Torque
1	4	D241550	Mounting Bracket	
2	1	D362581-D1	Driver Side Step	
3	1	D362581-P1	Passenger Side Step	
4	12		M8-1.25 Hex Nut	20 Ft. Lbs
5	12		5/16" Flat Washer	
6	12		5/16" Lock Washer	
7	8		3/8" -16 x 1-1/4" Hex Bolt	30 Ft. Lbs
8	8		3/8" Hex Nut	
9	8		3/8" Flat Washer	
10	8		3/8" Lock Washer	



Tool Required:

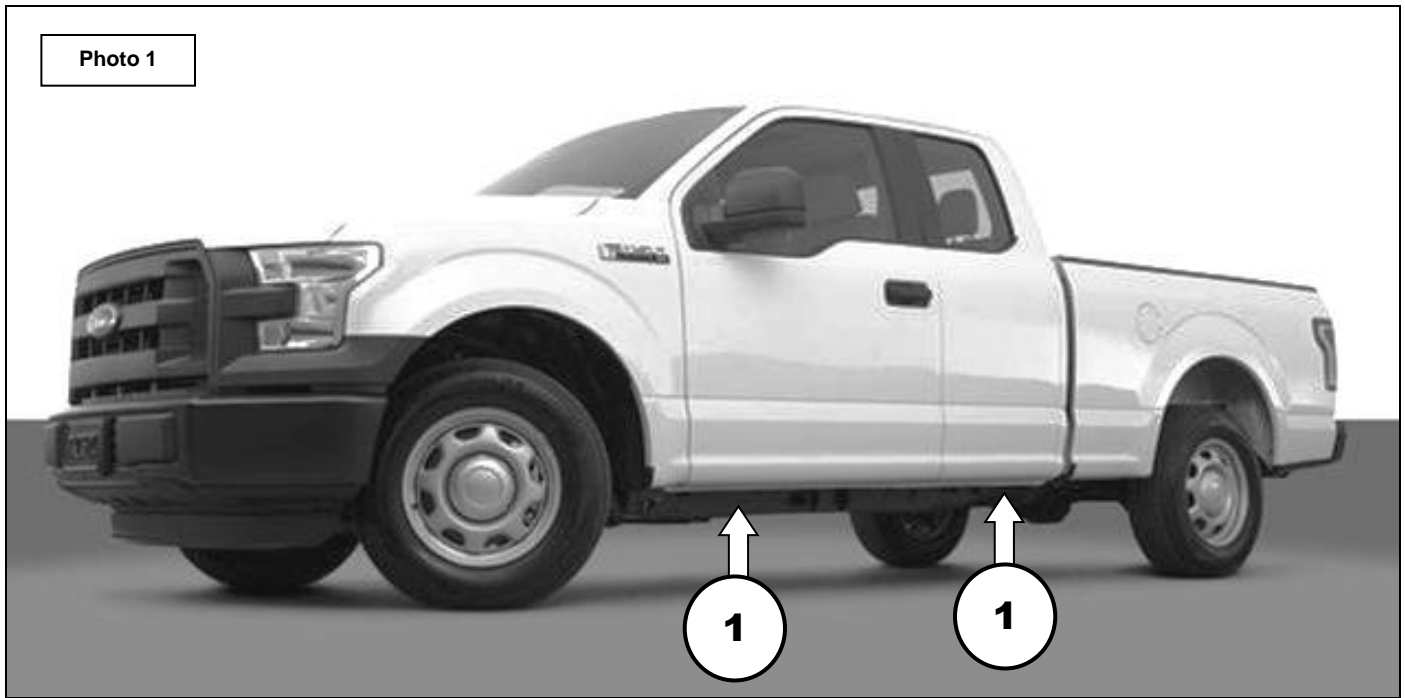
- 13mm & 9/16" Socket
- 13mm & 9/16" Wrench
- Ratchet & Ratchet Extension

Approximate installation time: 60 min

Read the installation instructions completely and verify that all of the parts listed are accounted for. If you have defective, missing or damaged parts or need assistance, please contact *Go Rhino Products* for fast, friendly customer service at: 1-888-427-4466 or email: warranty@gorhino.com

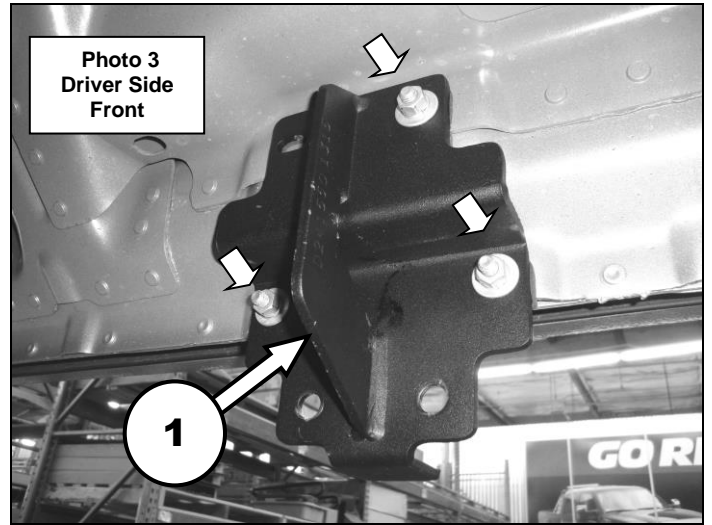
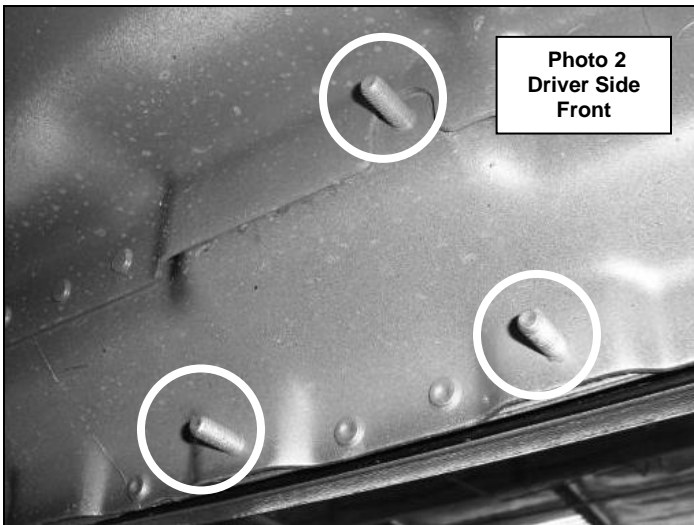
Installation

This installation uses 2 mounting brackets per side, (Photo 1).

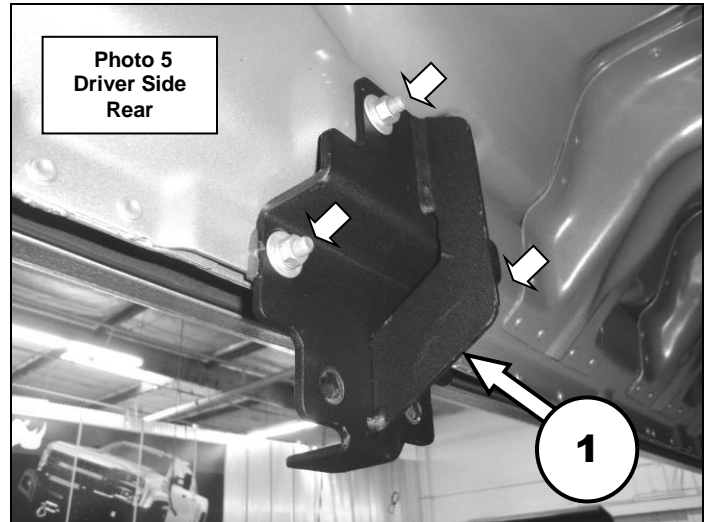
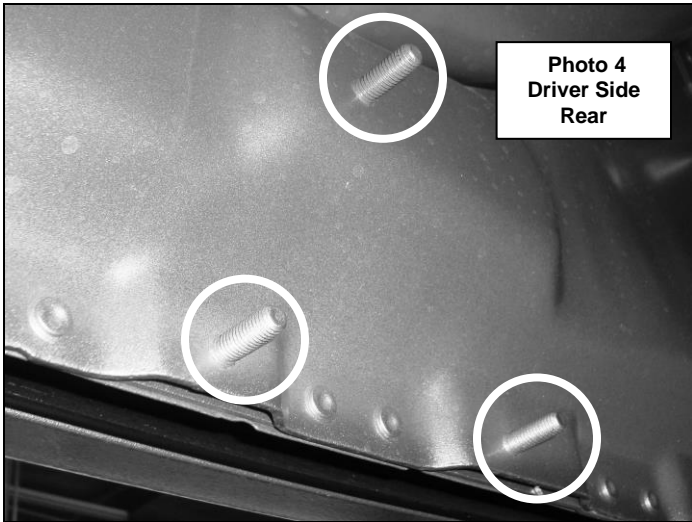


Step-1 Begin the installation on the driver side. Starting at the front of the vehicle, locate the (3) threaded studs on the inner rocker panel, (Photo 2).

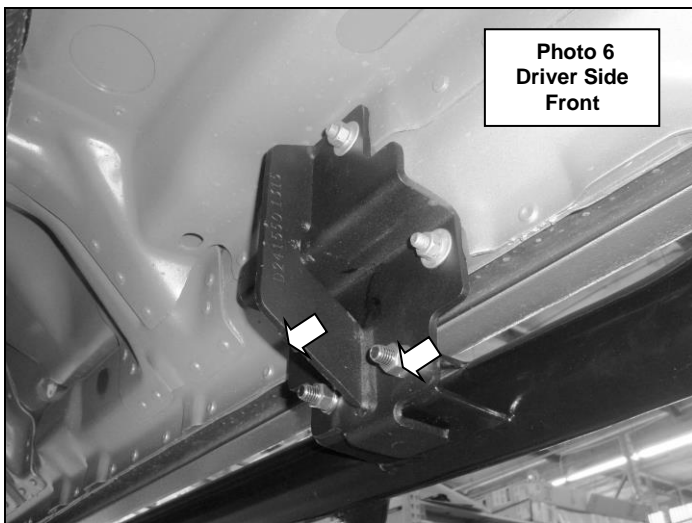
Step-2 Install one of the mounting brackets by positioning the bracket over the studs and secure to the rocker panel using (3) M8 flat washers, (3) M8 lock washers and (3) M8 hex nuts. Leave the nuts loose for final adjustment, (Photo 3).



Step-3 Locate the (3) threaded studs on the inner rocker panel at the rear of the cab and repeat the above steps to install one of the mounting brackets, (Photo 4 & 5).



Step-4 Attach the driver side step to each bracket using (2) 3/8" x 1 1/4" hex bolts, (2) 3/8" flat washers, (2) 3/8" lock washers and (2) 3/8" hex nuts, (Photo 6 & 7).



Step-5 Align the side step with the vehicle and tighten all bracket and side step nuts and bolts, (Photo 8). Repeat the above steps to install the passenger side brackets and side step. Remember to check and retighten the nuts and bolts every six months.

