



5150 Eucalyptus Avenue Unit A
 Chino, Ca. 91710
 888.360.3696
 www.anzousa.com



Installation Manual:

Part Number:121059 and 121060
 Honda Civic (04-05)
 Projector H.L Halo
 Black clear amber and chrome
 clear amber

Completely read all the instructions before installation
 Improper installation will void warranty!

Step 1



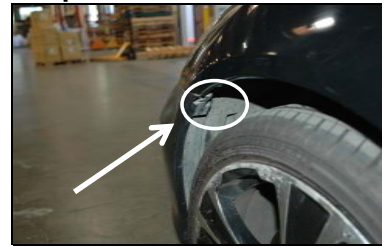
Tools needed: 10 mm socket
 Phillip screw driver
 Plastic pin remover
 Wire splice connectors

Step 2



Remove push pin along top grill and also bottom portion of the bumper

Step 3



Remove push-pin and bolt along the fender

Step 4



Remove the bumper carefully and place it on the ground

Step 5



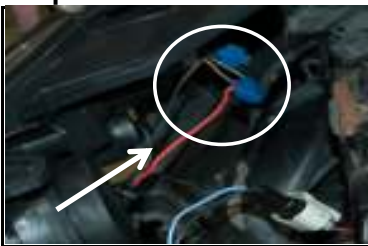
Remove the headlight by removing 4 bolts located on the headlight

Step 6



Remove turn signal harness, parking light harness, and low/high beam harness

Step 7



Splice the red wire coming out of the headlight with the red/yellow

Step 8



Install headlight by reversing step 6 and step 5

Step 9



Test all functions before operating the vehicle

wire coming out of the parking
light harness; splice the black
wire with the black wire coming
out of the parking light harness

information. Damage due to improper installation or road hazards is not covered. Seller and manufacturers' only obligations shall be to replace the product proven to be defective. Neither seller nor manufacturer shall be liable for any injury, loss or damage, direct or consequential, arising out of the use of or the inability to use the product. Before using, user shall determine the suitability of the product for its intended use, and user assumes all risk and liability whatsoever in connection therewith.

© 2008 AnzoUSA™. All rights reserved.

