



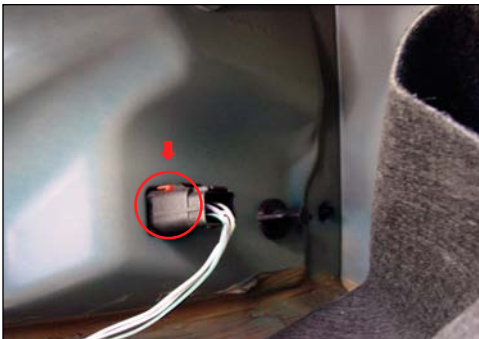
No tools are needed to remove the taillights.



Remove the plastic wing-nut.



Remove the two plastic wing-nuts hidden behind the carpet.



Pull the red clip out and disconnect the plug from the housing. Pull the taillight straight out.



Place the resistor behind the bumper to keep cool.



Insert the taillight onto the car and connect the stock plug in into the L.E.D taillight. Make sure red clip is secure.



Make sure taillights are working properly before driving.



Technical Support :
1 - (888) - 360 - 3696
techsupport@anzousa.com