

**6000 SERIES SIDESTEPS  
INSTALLATION INSTRUCTIONS**

PART NO. 6425MB, 6425MC / 2007-2010 TOYOTA TUNDRA DOUBLE CAB 4DR 2/4WD  
**Do not attempt to install this product on any vehicle other than the one it is designed for and listed above!**

**PACKING LIST**

<b><u>QTY</u></b>	<b><u>PART DESCRIPTION</u></b>	<b><u>QTY</u></b>	<b><u>PART DESCRIPTION</u></b>
14	M8 X 30mm HEX BOLT	2	½" LOCK WASHER
1	M8 HEX NUT	2	½" FLAT WASHER
14	5/16" LOCK WASHER	1	6425D DRIVER SIDE STEP FRONT/REAR
14	5/16" FLAT WASHER	1	6425P PASSENGER SIDE STEP FRONT/REAR
10	3/8" X 1" HEX BOLT	1	372894BA FRONT BRACKET SET
10	3/8" LOCK WASHER	1	371854BA CENTER BRACKET SET
10	3/8" FLAT WASHER	1	371854AB REAR BRACKET SET
2	½" x 2" HEX BOLT	1	376893AA REAR AUXILIARY BRACKET SET
2	3/8" HEX NUT		

**PAR**

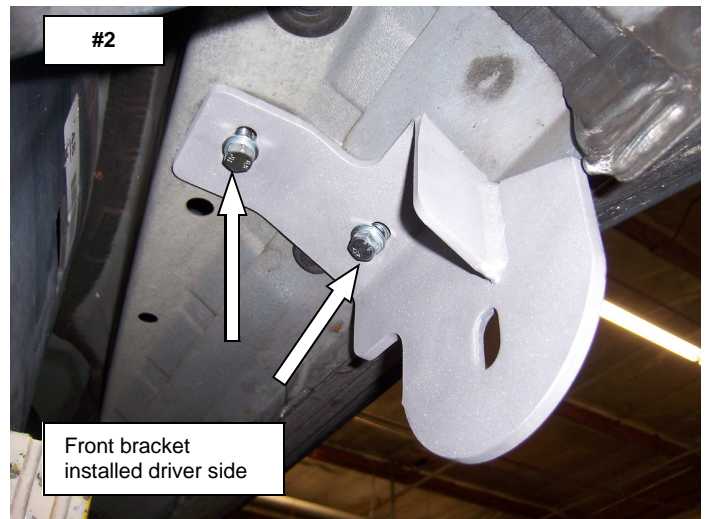
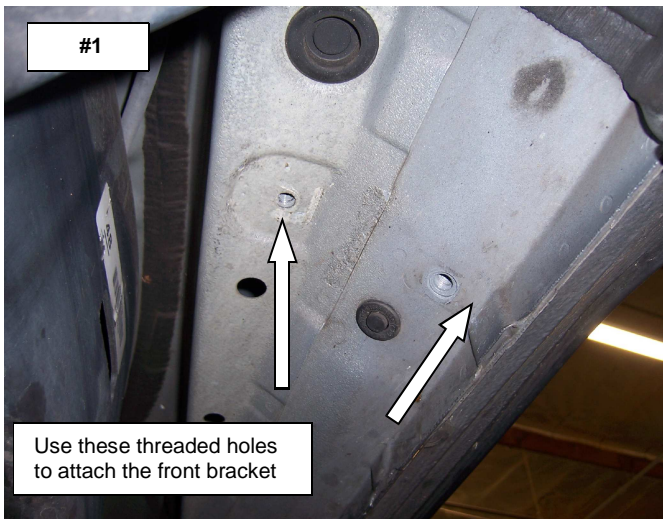
**INSTALLATION INSTRUCTIONS**

**READ THE INSTRUCTIONS COMPLETELY BEFORE YOU BEGIN THE INSTALLATION.**

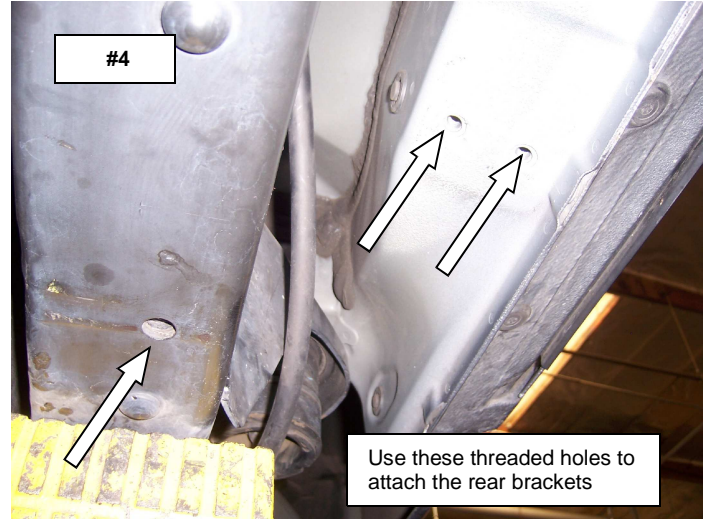
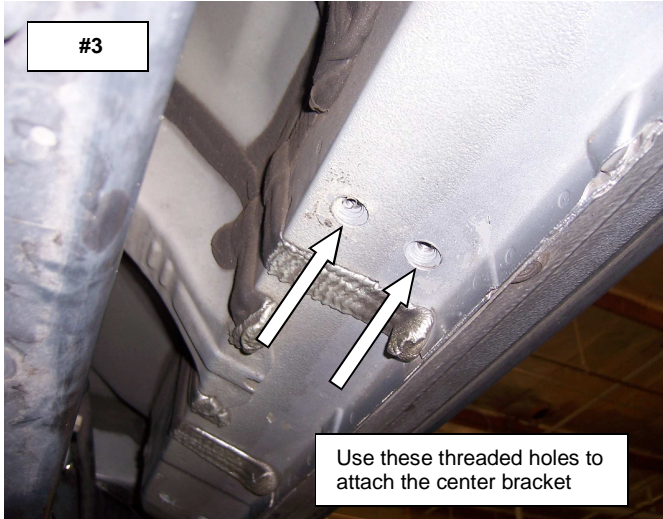
**STEP 1.** This installation uses (4) brackets per side. Begin by installing the driver side brackets.

**STEP 2.** Locate the (2) threaded holes in the underside body panel at the front of the vehicle.  
**PHOTO #1**

Attach the front bracket to the body panel using (2) M8 x 30mm hex bolts, (2) 5/16" lock washers and (2) 5/16" flat washers. Do not tighten. **PHOTO #2**



**STEP 3.** Install the center and rear brackets. Locate the threaded holes in the underside body panel and the bottom of the frame rail at the rear of the vehicle. **PHOTO #3 & PHOTO #4**

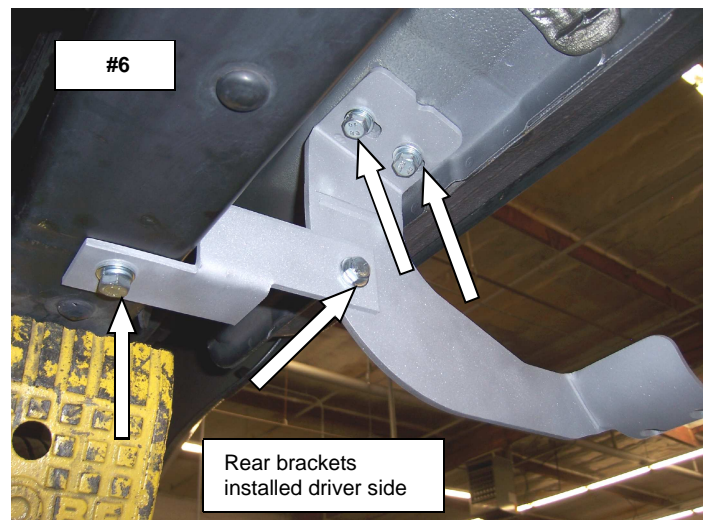
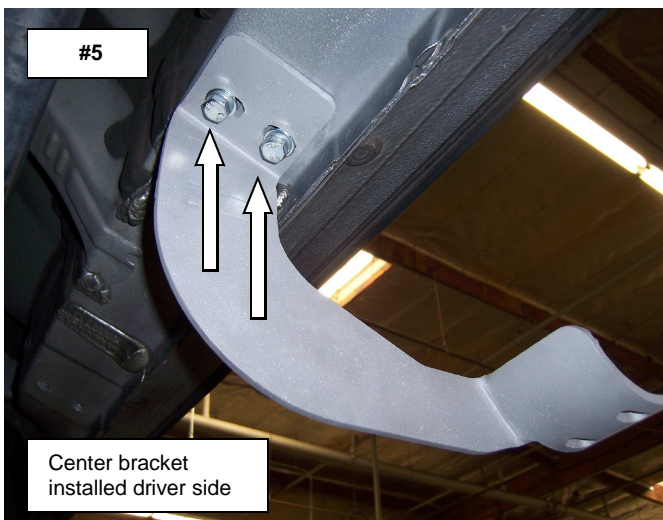


**STEP 4.** Attach the center bracket to the body panel using (2) M8 x 30mm hex bolts, (2) 5/16" lock washers and (2) 5/16" flat washers. Do not tighten. **PHOTO #5**

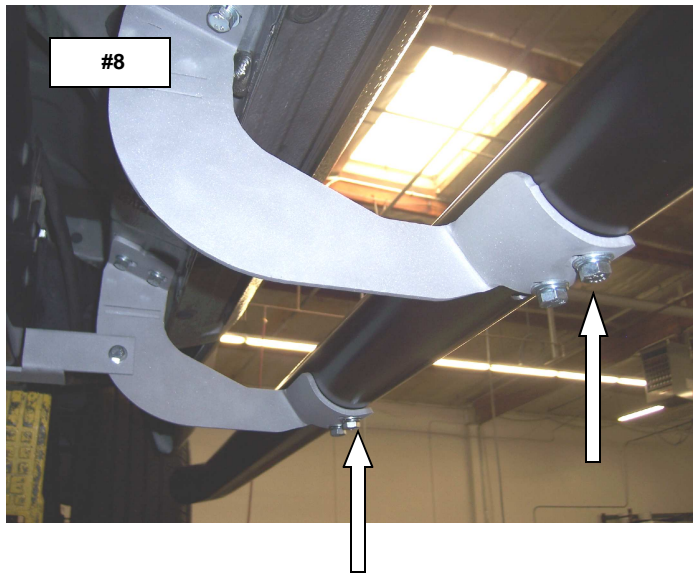
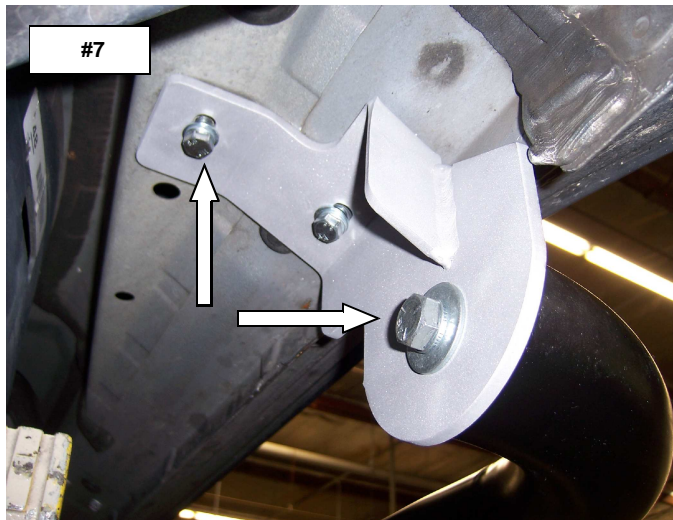
**STEP 5.** Attach the rear bracket to the body panel using (2) M8 x 30mm hex bolts, (2) 5/16" lock washers and (2) 5/16" flat washers. Do not tighten. **PHOTO #6**

**STEP 6.** Attach the rear auxiliary bracket to the bottom of the frame rail using (1) M8 x 30mm hex bolt, (1) 5/16" lock washer, (1) 5/16" flat washer and to the rear bracket using (1) 3/8 x 1" hex bolt, (1) 3/8" lock washer, (1) 3/8" flat washer and (1) 3/8" hex nut. Do not tighten. **PHOTO #6**

**Note:** Attach the passenger side rear auxiliary bracket to the bottom of the frame rail using (1) M8 x 30mm hex bolt, (1) 5/16" flat washer, (1) 5/16" lock washer and (1) M8 hex nut.



**STEP 7.** Attach the side step to the front bracket using (1) ½" x 2" hex bolt, (1) lock washer and (1) flat washer and to center and rear brackets using (2) 3/8" x 1" hex bolts, (2) 3/8" lock washers and (2) 3/8" flat washers. Do not tighten. **PHOTO #7 & PHOTO #8**



**STEP 8.** Align the side step with the vehicle and tighten all mounting bracket and side step nuts and bolts.

**STEP 9.** Repeat the above procedure to install the passenger side brackets and side step.



Go Rhino! Products have a high quality finish that must be cleaned and cared for in the same manner that you clean and care for your vehicle. Do not use abrasive cleaners on the finish. We recommend using only a nonabrasive automotive wax such as pure carnauba.

**FOR TECHNICAL OR WARRANTY INFORMATION CALL:  
TOLL FREE (888)427-4466 FAX (714)672-0278  
GO RHINO! Products® 591 W. Apollo St. Brea, CA 9282**