



EZ - Ride Suspension

Installation manual

Dual stabilizer kit

2003 - 2007 Dodge Ram 2500/3500

Part # 66395

sj10062011rev.02

Part # 66395

2003 - 2007 Dodge Ram 2500/3500

Dual stabilizer kit

<u>Part #</u>	<u>Description</u>	<u>Qty.</u>
66395-01	Center bracket	1
66395-02	Driver side outer bracket	1
66395-03	Passenger side outer bracket	1
66395-04	Cylinder	2
5U-516114234R	5/16" x 1 1/4" x 2 3/4" round u-bolt	2
S10014	Sleeve (.625" x .500" x 1.500")	2
S10083	Sleeve (.625" x .500" x 2.250" with washer)	2
S10091	Sleeve (.625" x .500" x .470")	1
SX5000	Stabilizer sticker	2
66395NB	Hardware bag	1
66395INST	Instruction manual (customer copy)	1
66395INST	Instruction manual (installer copy)	1
MIRRORHANGER	Rear view mirror hanger	1
WARNINGDECAL	Warning decal	1

Congratulations on your selection to purchase a Tuff Country EZ-Ride Suspension System. We at Tuff Country EZ-Ride Suspension are proud to offer a high quality product at the industries most competitive pricing. Thank you for your confidence in us and our product.

If you desire to return your vehicle to stock, it is the customers responsibility to save all stock hardware.

The Tuff Country EZ-Ride Suspension product safety label that is included in your kit box must be installed inside the cab in plain view of all occupants.

Make sure to use thread locker or loctite on all new and stock hardware associated with the installation of this suspension system.

Special note: Before installation begins, it is the customers/installers responsibility to make sure that all parts are on hand. If any parts are missing, please feel free to call one of our customer service representatives @ (801) 280-2777.

Important customer information:

Tuff Country EZ-Ride Suspension highly recommends that a qualified or a certified mechanic performs this installation.

It is the responsibility of the customer/installer to wear safety glasses at all times when performing this installation.

It is the customers/installers responsibility to read and understand all steps before installation begins. If you have any questions or concerns, please contact our technical department @ (801) 280-2777. Also, the OEM manual should be used as a reference guide.

This vehicles reaction and handling characteristics may differ from standard cars and/or trucks. Modifications to improve and/or enhance off road performance may raise the intended center of gravity. Extreme caution must be utilized when encountering driving conditions which may cause vehicle imbalance or loss of control. **DRIVE SAFELY!** Avoid abrupt maneuvers: such as sudden sharp turns which could cause a roll over, resulting in serious injury or death.

It is the customers responsibility to make sure that a re-torque is performed on all hardware associated with this suspension system after the first 100 miles of installation. It is also the customers responsibility to do a complete re-torque after every 3000 miles or after every off road use.

After the original installation, Tuff Country EZ-Ride Suspension also recommends having the alignment checked every 6 months to ensure proper tracking, proper wear on tires and front end components. Tuff Country EZ-Ride Suspension takes no responsibility for abuse, improper installation or improper suspension maintenance.

Limited lifetime warranty

Notice to all Tuff Country EZ-Ride Suspension customers: It is your responsibility to keep your original sales receipt! If failure should occur on any Tuff Country EZ-Ride Suspension component, your original sales receipt must accompany the warranted unit to receive warranty. Warranty will be void if the customer can not provide the original sales receipt. Do not install a body lift in conjunction with a suspension system. If a body lift is used in conjunction with any Tuff Country EZ-Ride Suspension product, your Tuff Country EZ-Ride Suspension WARRANTY WILL BE VOID. Tuff Country Inc. ("Tuff Country") suspension products are warranted to be free from defects in material and workmanship for life if purchased, installed and maintained on a non-commercial vehicle; otherwise, for a period of twelve (12) months, from the date of purchase and installation on a commercial vehicle, or twelve thousand (12,000) miles (which ever occurs first). Tuff Country does not warrant or make any representations concerning Tuff Country Products when not installed and used strictly in accordance with the manufacturer's instructions for such installation and operation and accordance with good installation and maintenance practices of the automotive industry. This warranty does not apply to the cosmetic finish of Tuff Country products nor to Tuff Country products which have been altered, improperly installed, maintained, used or repaired, or damaged by accident, negligence, misuse or racing. ("Racing is used in its broadest sense, and, for example, without regards to formalities in relation to prizes, competition, etc.) This warranty is void if the product is removed from the original vehicle and re-installed on that or any other vehicle. This warranty is exclusive and is in lieu of any implied warranty of merchantability, fitness for a particular purpose or other warranty of quality, whether express or implied, except the warranty of title. All implied warranties are limited to the duration of this warranty. The remedies set forth in this warranty are exclusive. This warranty excludes all labor charges or other incidental of consequential damages. Any part or product returned for warranty claim must be returned through the dealer of the distributor from whom it was purchased. Tuff Country reserves the right to examine all parts returned to it for warranty claim to determine whether or not any such part has failed because of defect in material or workmanship. The obligation of Tuff Country under this warranty shall be limited to repairing, replacing or crediting, at its option, any part or product found to be so defective. Regardless of whether any part is repaired, replaced or credited under this warranty, shipping and/or transportation charges on the return of such product must be prepaid by the customer under this warranty.

Important information that needs to be read before installation begins:

This dual in-line stabilizer kit will only work on vehicles that have a 4.5" - 6" suspension lift installed on it. If the vehicle that you are working on does not have a 4.5" - 6" suspension lift on it, STOP and do not install on your vehicle. Please contact the company and return the kit who you purchased it from. If installed, damage will occur to the stabilizers and your warranty will be VOID.

Tuff Country EZ-Ride Suspension packages (2) sets of instruction sheets with this box kit. (1) is for the installer and (1) is for the customer. The (1) for the customer has some post installation procedure literature and it is the installers responsibility to make sure that the customer receives a copy of the installation manual along with the literature.

Before installation begins, Tuff Country EZ-Ride Suspension highly recommends that the installer performs a test drive on the vehicle. During the test drive, check to see if there are any uncommon sounds or vibrations. If uncommon sounds or vibrations occur on the test drive, uncommon sounds or vibrations will be enhanced once the suspension system has been installed. Tuff Country EZ-Ride Suspension highly recommends notifying the customer prior to installation to inform the customer of these issues if they exist.

Hardware bag 66395NB includes:

<u>Description</u>	<u>Quantity</u>
516UN (5/16" unitorque nut)	4
516WA (5/16" USS flat washer)	4
122B (1/2" x 2" bolt)	1
12214B (1/2" x 2 1/4" bolt)	2
12312B (1/2" x 3 1/2" bolt)	2
12WA (1/2" USS flat washer)	8
12UN (1/2" unitorque nut)	5
38112B (3/8" x 1 1/2" bolt)	4
38WA (3/8" USS flat washer)	8
38UN (3/8" unitorque nut)	4
38LWA (3/8" lock washer)	4

Recommended tools selection:

Torque wrench
Standard socket set
Standard wrench set
Metric socket set
Metric wrench set
Tape measure

Please follow instructions carefully:

Place the vehicle on a flat surface and make sure that the steering wheel is centered. Block the front and rear tires so the vehicle is stable and can not roll forward or backward.

Stabilizer installation:

1. If the vehicle that you are working on is equipped with an OE steering stabilizer, remove the stabilizer and discard the stabilizer and hardware.

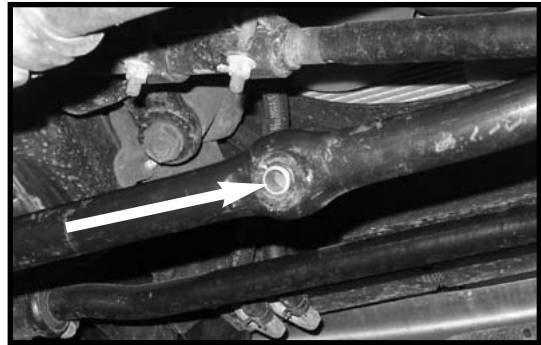
2. Working on the passenger side, carefully cut off the OE steering stabilizer mounting tabs. **Special note: Tuff Country does not recommend using a torch when performing this step. Tuff Country recommends using a cut off wheel. The front and rear tabs need to be cut off. Once the tabs have been cut off, clean and dress up any exposed metal.**



3. Locate the driver and passenger side outer dual stabilizer brackets. Also, locate (4) 3/8" x 1 1/2" bolts, (8) 3/8" USS flat washers, (4) 3/8" unitorque nuts and (4) 3/8" lock washers from hardware 66395NB. Working on the driver side, secure the driver side outer dual stabilizer bracket to the outside of the lower control arm bracket that is welded to the front axle tube using a pair of vise grips. **Special note: Make sure that the new driver side outer dual stabilizer bracket is pushed up far enough that it is flush with the stock axle tube.** Using the new driver side out bracket as a guide, carefully drill (2) 3/8" holes into the lower control arm bracket. Secure the new bracket to the new location using the new 3/8" x 1 1/2" bolts and hardware. Make sure to use thread locker or loctite and torque to **22 ft lbs**. Repeat procedure on the passenger side.

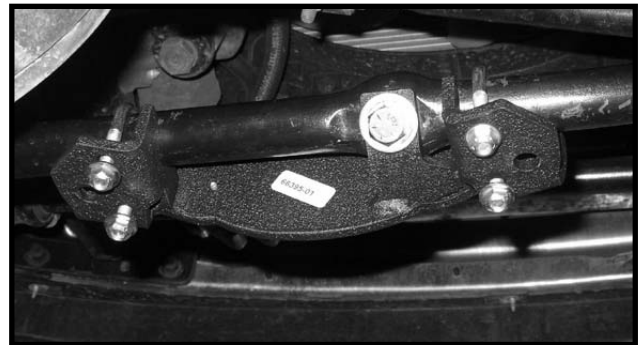


4. Locate the new S10091 (.625" x .500" x .470") crush sleeve. Install the sleeve into the tie rod. **Special note: Install the sleeve from the bottom side of the tie rod.**



5. Locate the new center dual stabilizer bracket. Also, locate (1) 1/2" x 2" bolt, (2) 1/2" USS flat washers and (1) 1/2" unitorque nut from hardware bag 66395NB. Secure the center bracket to the tie rod using the new 1/2" x 2" bolt and hardware. **DO NOT TIGHTEN AT THIS POINT.**

6. Locate (4) 5/16" x 1 1/4" x 2 3/4" u-bolts. Also, locate (4) 5/16" unitorque nuts and (4) 5/16" USS flat washers from hardware bag 66395NB. Secure the center bracket to the tie rod using the new u-bolts and hardware. Make sure to add loctite and torque to **14 ft lbs**. Move back to the 1/2" x 2" bolt that was installed earlier and add some loctite and torque to **55 ft lbs**.



7. Locate the new cylinders. Locate (2) new S10014 (.625" x .500" x 1.500") sleeve and (2) new S10083 (.625" x .500" x 2.250" with welded washer) sleeve. Install the new shock boots onto the new cylinders. **Special note: shock boots are not included with the dual stabilizer kit and need to be ordered as a separate part number. If you have not already ordered your new shock boots, please contact Tuff Country or your local Tuff Country dealer and order your new shock boots.** Install the new S10014 into the rod end of the stabilizer and the S10083 into the body end of the stabilizer.

8. Locate (2) 1/2" x 3 1/2" bolts, (4) 1/2" USS flat washers and (2) 1/2" unitorque nuts from hardware bag 66395NB. Working on the driver side, secure the body end of the stabilizer to the driver side bracket using the new 1/2" x 3 1/2" bolt and hardware. **DO NOT TIGHTEN AT THIS POINT.** Repeat procedure on the passenger side.



9. Locate (2) 1/2" x 2 1/4" bolts, (2) 1/2" USS flat washers and (2) 1/2" unitorque nuts from hardware bag 66395NB. Working on the driver side, secure the new stabilizer to the center bracket using the new 1/2" x 2 1/4" bolt and hardware. **Special note: A washer is not needed on the nut side of the bolt.** Make sure to use loctite and torque to **55 ft. lbs.** Repeat procedure on the passenger side.

10. Working on the driver side, move back to the 1/2" x 3 1/2" bolt that connects the cylinder to the outer bracket and add some loctite and torque to **55 ft. lbs.** Repeat procedure on passenger side.

11. Once the cylinders have been installed, turn the steering wheel all the way to the driver and passenger side to make sure that there is no binding and also make sure that there is the same amount of turning radius on the driver and passenger side.



Congratulations, installation complete!

Special note: After the completion of the installation, Tuff Country EZ-Ride Suspension recommends taking the vehicle to an alignment shop and having a proper front end alignment performed.

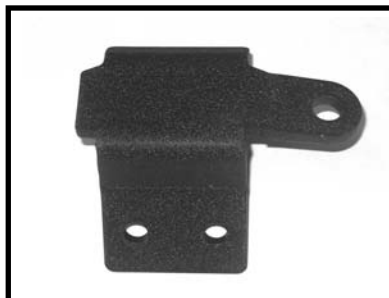
Tuff Country EZ-Ride Suspension recommends that a complete re-torque is done on all bolts associated with this suspension system. It is the customers responsibility to make sure that a re-torque is performed on all hardware associated with this suspension system after the first 100 miles of installation. It is also the customers responsibility to do a complete re-torque after every 3000 miles or after every off road use. Neglect of following these steps could cause brackets to come loose and cause serious damage to the suspension system and to the vehicle.

Tuff Country EZ-Ride Suspension packages (2) sets of instruction sheets with this box kit. (1) is for the installer and (1) is for the customer. The (1) for the customer has some post installation procedure literature and it is the installers responsibility to make sure that the customer receives a copy of the installation manual along with the literature.

If you have any questions or concerns, please feel free to contact Tuff Country or your local Tuff Country dealer.



66395-01 / Qty. 1
Center bracket



66395-02 / Qty. 1
DS outer bracket



66395-01 / Qty. 1
PS outer bracket