

# DIRECT-REPLACEMENT INSTALLATION GUIDE



## **LAND ROVER DEFENDER (83-95) DISCOVERY (94-98)**

985-24-078 - 2.0 Performance Series IFP

985-24-079 - 2.0 Performance Series IFP

985-24-080 - 2.0 Performance Series IFP

985-24-081 - 2.0 Performance Series IFP

985-24-122 - 2.0 Performance Series Reservoir

985-24-123 - 2.0 Performance Series Reservoir



## LAND ROVER DEFENDER (83-95) LAND ROVER DISCOVERY (94-98)

985-24-078 - 2.0 Performance Series IFP

985-24-079 - 2.0 Performance Series IFP

985-24-080 - 2.0 Performance Series IFP

985-24-081 - 2.0 Performance Series IFP

985-24-122 - 2.0 Performance Series Reservoir

985-24-123 - 2.0 Performance Series Reservoir

## INSTALLATION GUIDE

Thank you for choosing FOX shocks for your vehicle. FOX products are designed, tested, and manufactured by the finest professionals in the industry.

FOX recommends that you become completely familiar with the handling characteristics of your modified vehicle before operating it under rigorous conditions, helping to avoid potential rollover situations and other loss of control events. FOX further recommends that you use appropriate protective equipment at all times when operating your vehicle.

To achieve the best performance and product longevity, periodic service and maintenance is required. Please refer to the Service and Upgrades section for more information.

## WARNINGS

- FOX shocks should always be installed as a pair for maximum performance.
- Proper installation and service procedures are essential for the safe and reliable installation of chassis parts, requiring the experience and tools specially designed for this purpose. Installation and maintenance procedures for this product must be performed by a qualified service technician, to avoid potentially unsafe vehicle handling characteristics, which may result in SERIOUS INJURY or DEATH.
- Modifying your vehicle's suspension will change the handling characteristics of your vehicle. Under certain conditions, your modified vehicle may be more susceptible to loss of control or rollover, which can result in SERIOUS INJURY or DEATH. Thoroughly familiarize yourself with the modified vehicle handling characteristics before any rigorous vehicle operation. Wear body protective gear including head protection when appropriate. Installation of vehicle roll bars or cage is highly recommended.
- FOX shocks are gas-charged and are highly pressurized. Placing shocks in a vise or clamp, applying heat, or attempting to open or service the shock without the proper tools and training can result in SERIOUS INJURY or DEATH. Do not attempt to modify, puncture or incinerate a FOX direct-replacement, coil-over shock absorber.
- Any attempt to misuse, misapply, modify, or tamper with any FOX product voids any warranty and may result in SERIOUS INJURY or DEATH.

## GUIDELINES

- Always use a chassis lift for the installation of shocks, and make certain that the raised vehicle is securely attached to the lift to prevent the vehicle from slipping, falling, or moving during the installation process.
- DO NOT install any FOX product without the necessary special tools, expertise and chassis lift, or you will subject yourself to the risk of SERIOUS INJURY or DEATH. If you elect to not use a chassis lift (which election may result in SERIOUS INJURY or DEATH), ensure that the vehicle is

on level ground, that all tires on the ground during installation are blocked to prevent vehicle movement, that at least two tires are on the ground at all times, and that adequately secured jack stands are used to support the vehicle. NEVER get under the vehicle until you have checked to ensure that the vehicle will be stable during installation.

- FOX direct-replacement shocks are designed to fit your vehicle's shock mounts with no modifications with the exception of reservoir placement on specific models and applications.

## INSTRUCTIONS - FRONT

Medium-strength thread-lock (blue Loctite) is recommended on all bolts.

1. Please read the installation guidelines for instructions on how to properly lift and secure vehicle.
2. Locate shock tower covers inside the engine bay on the fender wells. Remove covers, it may be necessary to disconnect brackets or components in order to remove covers.(Fig. 1)

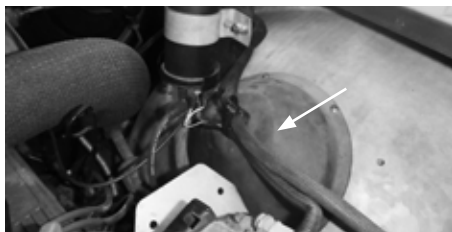


Fig. 1: Driver side shock cover

3. Remove both front wheels.
4. Remove the (4) nuts securing the factory shock tower assembly to the vehicle (Fig. 2). (Do not discard nuts as they will be used with your new shock.)
5. Remove stock shock from lower mount, it may be necessary to support or raise

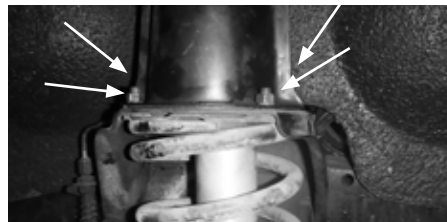


Fig. 2: Passenger side

the vehicle axle in order to remove/install shock assembly.

6. Remove factory shock tower assembly by sliding upwards and out through the engine bay.
7. Remove stock shock from tower assembly.
8. Install new Fox shock into tower, with a stem bushing and washer on the bottom and top. Tighten lock nut until 5/8" of total stem is showing.  
\*\*External reservoir models require aftermarket shock tower
9. Reinstall shock tower assembly. Install shock into lower mount, using washer and stem bushing on each side, tighten lock nut until 5/8" of total stem is showing (Fig. 3).

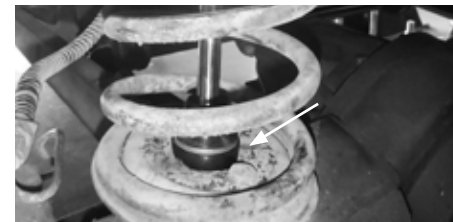


Fig. 3: Passenger side

10. Connect shock tower to vehicle reusing factory hardware, torque to factory specifications. For external reservoir models, please refer to shock tower manufacturers recommended mounting and torque specifications.



Fig. 4: Driver side remote reservoir mounting

11. For external reservoir models, refer to (Fig. 4) for suggested routing/mounting. It is recommended to use the vehicle frame for reservoir bracket mounting. Make sure that reservoir bracket location will clear vehicle tires when fully turned. When installing reservoir bracket, it is recommended to first mark and drill a 7/32" pilot hole before installing supplied 1/4" self tapping screws.
12. On external reservoir models, mount the reservoir onto the reservoir bracket with the supplied hose clamps. Utilize the slots in the bracket to locate the clamps. Do not feed the clamps through the slots in the brackets (Fig. 4).
13. Reinstall shock tower covers and any previously removed components, torque to factory specifications.
14. Check that suspension has proper clearance by steering completely in both directions.
15. Reinstall wheels, torque to factory specifications.

## INSTRUCTIONS - REAR

Medium-strength thread-lock (blue Loctite) is recommended on all bolts.

1. Please read the installation guidelines for instructions on how to properly lift and secure vehicle.
2. Remove both rear wheels.
3. Remove stock shocks, it may be necessary to support or raise the vehicle axle in order to remove nuts and for installation of new Fox shock. (Do not discard nuts as they will be used with your new shock.)
4. Install new Fox shock, make sure that shaft side is pointed down. For remote reservoir models, make sure that reservoir is pointing toward the front of the vehicle. (Fig. 5)
5. Connect shock to upper mount, reusing factory nut and washers. Torque to factory specifications.
6. Connect shock to lower mount using supplied stem mount hardware, using a washer and stem bushing on each side. Tighten lock nut until 5/8" of total stem is showing.
7. Check that suspension has proper clearance.

8. Reinstall wheels, torque to factory specifications.



Fig. 5: Passenger side



## FOX LIMITED WARRANTY

FOX Factory, Inc., a California corporation having offices at 130 Hangar Way, Watsonville, CA 95076 (“FOX”), makes the following LIMITED WARRANTY with respect to its suspension products:

### LIMITED ONE (1) YEAR WARRANTY ON SUSPENSION PRODUCTS

Subject to the limitations, terms and conditions hereof, FOX warrants, to the original retail owner of each new FOX suspension product, that the FOX suspension product, when new, is free from defects in materials and workmanship. Unless otherwise required by law, this warranty expires one (1) year from the date of the original FOX suspension product retail purchase from an authorized FOX dealer or from a FOX authorized Original Equipment Manufacturer where FOX suspension is included as original equipment on a purchased vehicle. If law requires a warranty duration of greater than one (1) year, then, subject to the other provisions hereof, this warranty will expire at the end of the minimum warranty period required by such law.

## TERMS OF WARRANTY

This warranty is conditioned on the FOX suspension product being operated under normal conditions and properly maintained as specified by FOX. This warranty is only applicable to FOX suspensions purchased new from an authorized FOX source and is made only to the original retail owner of the new FOX suspension product and is not transferable to subsequent owners. This warranty is void if the FOX suspension product is subjected to abuse, neglect, improper or unauthorized repair, improper or unauthorized service or maintenance, alteration, modification, accident or other abnormal, excessive, or improper use.

Should it be determined by FOX in its sole and final discretion, that a FOX suspension product is covered by this warranty, it will be repaired or replaced, by a comparable model, at FOX’s sole option, which will be conclusive and binding. THIS IS THE EXCLUSIVE REMEDY UNDER THIS WARRANTY. ANY AND ALL OTHER REMEDIES AND DAMAGES THAT MAY OTHERWISE BE APPLICABLE ARE EXCLUDED, INCLUDING, BUT NOT LIMITED TO,

INCIDENTAL OR CONSEQUENTIAL DAMAGES OR PUNATIVE DAMAGES.

This limited warranty does not apply to normal wear and tear, malfunctions or failures that result from abuse, improper assembly, neglect, alteration, improper maintenance, crash, misuse or collision. This limited warranty gives the consumer specific legal rights. The consumer may also have other legal rights which vary from state to state or country to country. Some states and countries do not allow the exclusion or limitation of incidental or consequential damages or warranties, and if dictated by law the above limitations or exclusions may not apply to you. If it is determined by a court of competent jurisdiction that a certain provision of this limited warranty does not apply, such determination shall not affect any other provision of this limited warranty and all other provisions shall remain in full effect.

THIS IS THE ONLY WARRANTY MADE BY FOX ON ITS SUSPENSION PRODUCTS AND COMPONENTS, AND THERE ARE NO WARRANTIES WHICH EXTEND BEYOND THE DESCRIPTION HEREIN. ANY WARRANTIES THAT MAY OTHERWISE BE IMPLIED BY

LAW INCLUDING, BUT NOT LIMITED TO, ANY IMPLIED WARRANTY OF MERCHANTABILITY OR FITNESS FOR A PARTICULAR PURPOSE ARE EXCLUDED.



VISIT [RIDEFOX.COM/TRUCK](http://RIDEFOX.COM/TRUCK)  
TO FIND FOX OFFERINGS FOR  
YOUR TRUCK OR SUV

## RACE PERFORMANCE FOR YOUR DAILY DRIVER

# 2.0 PERFORMANCE SERIES IFP SHOCK

### REPLACE YOUR STOCK SHOCKS WITH RACE- WINNING TECHNOLOGY

#### HEAT-REDUCING DESIGN

- » Cold-forged, metal-impacted 6061 T6 aluminum shock body dissipates heat three times faster than a conventional steel body shock. The 2.0 Performance Series shock runs as cool as a 2.5 diameter shock on the same application.
- » FOX formulated race shock oil developed for ultimate performance at variable temperatures.

#### APPLICATION- SPECIFIC VALVING

- » During development we rigorously tested to maximize offroad performance by utilizing the same proprietary deburred valve shims and high-flow piston design that is found in FOX race products.

#### FADE-FREE PERFORMANCE

- » The Internal Floating Piston (IFP) design separates shock oil from the high-pressure nitrogen charged gas chamber, eliminating oil aeration and cavitation, while providing a predictable ride — capable of handling the roughest conditions with fade-free performance.

#### TOUGH FINISH

- » CNC machined aluminum components are Type II hard anodized to a scratch- and fade-free black finish.
- » Heavy-duty 5/8" chrome shafts are induction case hardened to over 55 Rockwell C, virtually eliminating scratches caused by roost and debris.



# STAY INFORMED

## REGISTER YOUR PRODUCT



- 1 Create your personal profile
- 2 Let us know which products you own
- 3 Receive special offers on service, upgrades, and product



RIDEFOX.COM 750 VERNON WAY SUITE 101. EL CAJON, CA 92020 USA  
1.800.FOX.SHOX (369.7469) 619.768.1800 ORSERVICE@RIDEFOX.COM

PN 605-01-149 REV A JANUARY 2015