



EZ - Ride Suspension

**PART NUMBER : 41805
XJ'S & ZJ'S FRONT SWAY BAR
QUICK DISCONNECTS**

PARTS LIST:

| Part # | Description | Qty. |
|----------|---------------------------------|------|
| 41805-01 | Driver Side Quick Disconnect | 1 |
| 41805-02 | Passenger Side Quick Disconnect | 1 |
| 41805-03 | Retention Strap | 2 |
| 41805NB | Hardware Bag | 1 |

Congratulations on your selection to purchase a Tuff Country EZ-Ride Suspension System. We at Tuff Country are proud to offer a high quality product at the industries most competitive pricing. Thank you for your confidence in us, and our product.

Before installation begins, it is the customers/installers responsibility to make sure that all parts are on hand. If any parts are missing, please feel free to call one of our customer service representative @ (800) 288-2190.

Make sure to use loctite on all new and stock hardware associated with this installation.

It is the responsibility of the installers to make sure that the rear view mirror hanger is hung from the rear view mirror. The rear view mirror hanger has instructions on proper post installation procedures.

Torque Settings

| | | | |
|-------|-----------------|------|----------------|
| 5/16" | 15—18 ft lbs. | 3/8" | 28—32 ft lbs. |
| 7/16" | 30—35 ft lbs. | 1/2" | 65—85 ft lbs. |
| 9/16" | 85—120 ft lbs. | 5/8" | 95—130 ft lbs. |
| 3/4" | 100—140 ft lbs. | | |

**INSTALLATION MANUAL
XJ'S AND ZJ'S FRONT SWAY BAR
QUICK DISCONNECTS
PART # 41805**

SJ020703rev.01

IMPORTANT CUSTOMER INFORMATION

Tuff Country EZ-Ride Suspension highly recommends that a qualified and or certified mechanic performs this installation.

If you desire to return your vehicle to stock, it is the customers responsibility to save all stock hardware.

This vehicles reaction and handling characteristics may differ from standard cars and/or trucks. Modifications to improve and/or enhance off road performance may raise the intended center of gravity. Extreme caution must be utilized when encountering driving conditions which may cause vehicle imbalance or loss of control. **DRIVE SAFELY!** Avoid abrupt maneuvers, such as sudden sharp turns which could cause a roll over, resulting in serious injury or death.

It is the customers responsibility to make sure that a re-torque is performed on all hardware associated with this suspension system after the first 500 miles of installation. It is also the customers responsibility to do a complete re-torque after every 3000 miles or after every off road use.

After the original installation, Tuff Country EZ-Ride Suspension also recommends having the alignment check every 6 months to ensure proper tracking, proper wear on tires and front end components. Tuff Country EZ-Ride Suspension take no responsibility for abuse, improper installation or improper suspension maintenance.

It is the responsibility of the customer or the mechanic to wear safety glasses at all times when performing this installation.

It is the customers/installers responsibility to read and understand all steps before installation begins. OEM manual should be used as a reference guide.

The Tuff Country EZ-Ride Suspension product safety label that is included in your kit box must be installed inside the cab in plain view of all occupants.

LIMITED LIFETIME WARRANTY

Notice to all Tuff Country EZ-Ride Suspension customers: It is your responsibility to keep your original sales receipt! If failure should occur on any Tuff Country EZ-Ride Suspension component, your original sales receipt must accompany the warranted unit to receive warranty. Warranty will be void if the customer can not provide the original sales receipt. Do not install a body lift in conjunction with a suspension system. If a body lift is used in conjunction with any Tuff Country EZ-Ride Suspension product, your Tuff Country EZ-Ride Suspension **WARRANTY WILL BE VOID.** Tuff Country Inc. ("Tuff Country") suspension products are warranted to be free from defects in material and workmanship for life if purchased, installed and maintained on a non-commercial vehicle; otherwise, for a period of twelve (12) months, from the date of purchase and installation on a commercial vehicle, or twelve thousand (12,000) miles (which ever occurs first). Tuff Country does not warrant or make any representations concerning Tuff Country Products when not installed and used strictly in accordance with the manufacturer's instructions for such installation and operation and accordance with good installation and maintenance practices of the automotive industry. This warranty does not apply to the cosmetic finish of Tuff Country products nor to Tuff Country products which have been altered, improperly installed, maintained, used or repaired, or damaged by accident, negligence, misuse or racing. ("Racing is used in its broadest sense, and, for example, without regards to formalities in relation to prizes, competition, etc.) This warranty is void if the product is removed from the original vehicle and re-installed on that or any other vehicle. This warranty is exclusive and is in lieu of any implied warranty of merchantability, fitness for a particular purpose or other warranty of quality, whether express or implied, except the warranty of title. All implied warranties are limited to the duration of this warranty. The remedies set forth in this warranty are exclusive. This warranty excludes all labor charges or other incidental or consequential damages. Any part or product returned for warranty claim must be returned through the dealer of the distributor from whom it was purchased. Tuff Country reserves the right to examine all parts returned to it for warranty claim to determine whether or not any such part has failed because of defect in material or workmanship. The obligation of Tuff Country under this warranty shall be limited to repairing, replacing or crediting, at its option, any part or product found to be so defective. Regardless of whether any part is repaired, replaced or credited under this warranty, shipping and/or transportation charges on the return of such product must be prepaid by the customer under this warranty.

Special Note: Do not use these quick disconnects with only one side connected. Doing so will cause damage to the quick disconnect or the vehicle. If vehicle is drive with only one side connected, your warranty will be void.

Grand Cherokee Owners: Please note that these instructions were photographed during an installation on a Cherokee. Although the function will be the same, the installation will vary slightly on the Grand Cherokee. Please use the instructions as a guide, but realize that actual drilling locations may appear different. When drilling, be sure to check clearance to avoid drilling into any hose or fuel lines.

Please Follow Instruction Carefully

1. Working on the driver side, remove the stock front sway bar end link and discard the stock front end link and all hardware. Repeat procedure on the passenger side.
2. Locate the driver side quick disconnect. **Special Note: Determining the driver side quick disconnect from the passenger side quick disconnect, once installed the bolt head will point away from the vehicle.** Place the round spacer ring on the threaded bracket bolt. Once the assembly has been inserted into place, make sure that the grease sert is facing downward away from the vehicle. Add the flat washer and nut then secure.
See Photo # 1
3. Attach the sway bar connecting stud to the lower mount bracket by inserting the stainless steel stud in the hole vacated by the sway bar arm and securing with the lock washer and nut. Be sure that the threaded portion of the stud points away from the vehicle.
See Photo # 2
4. Use the pin for leverage when tightening the nut.
See Photo # 3
5. Attach the sway bar arm by sliding the bushing onto the lower stainless steel stub. The use of a moly or lithium base grease will make installation of bushing easier.
See Photo # 4
6. Secure the quick disconnect by placing the washer on the side opposite the bolt and insert the pin into the stud. **Special Note:** This photo illustrates how the front axle will shift to the driver side when the suspension is fully extended by a hoist. You may want to connect the components with the vehicle on the ground.
See Photo # 5

Installation of the Retention Straps

7. Drill the hole where the retention strap will be attached. The photograph shows one possible location.
See Photo # 6

8. Place one washer on each side of the grommet located on the upper end of the retention strap and insert the bolt.

See Photo # 7

9. Tighten the bolt to secure the retention strap.

See Photo # 8

10. Locate and mark the proper position for the retention strap hook. Be sure to allow enough freedom in the strap to remove the strap from the hook.

See Photo # 9

11. Drill the hole that was marked in step # 10

See Photo # 10

12. Attach the retention strap hook to the vehicle using the metal screws provide.

See Photo # 11

Repeat step # 1 — 12 on the passenger side.

CONGRATULATIONS INSTALLATION COMPLETE

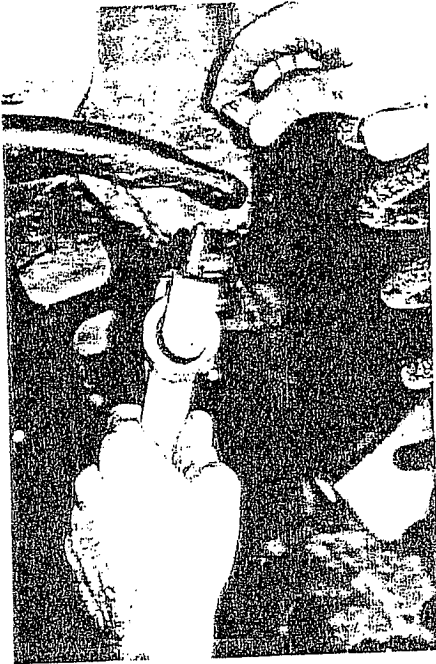


Photo # 1

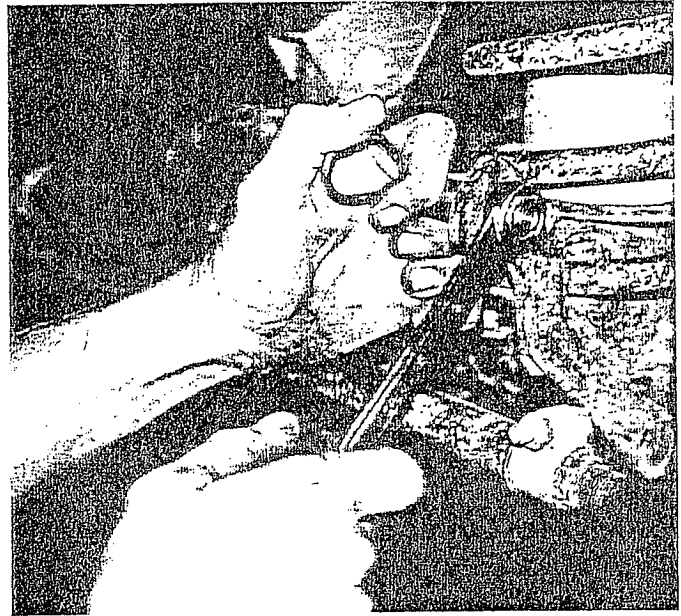


Photo # 3



Photo # 2

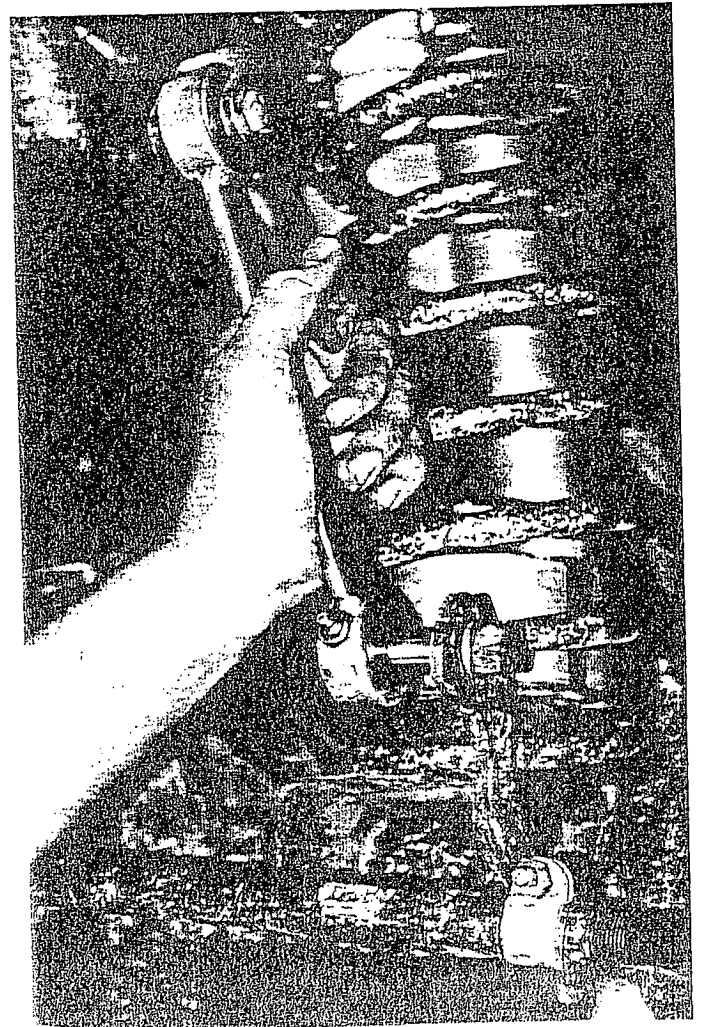


Photo # 4

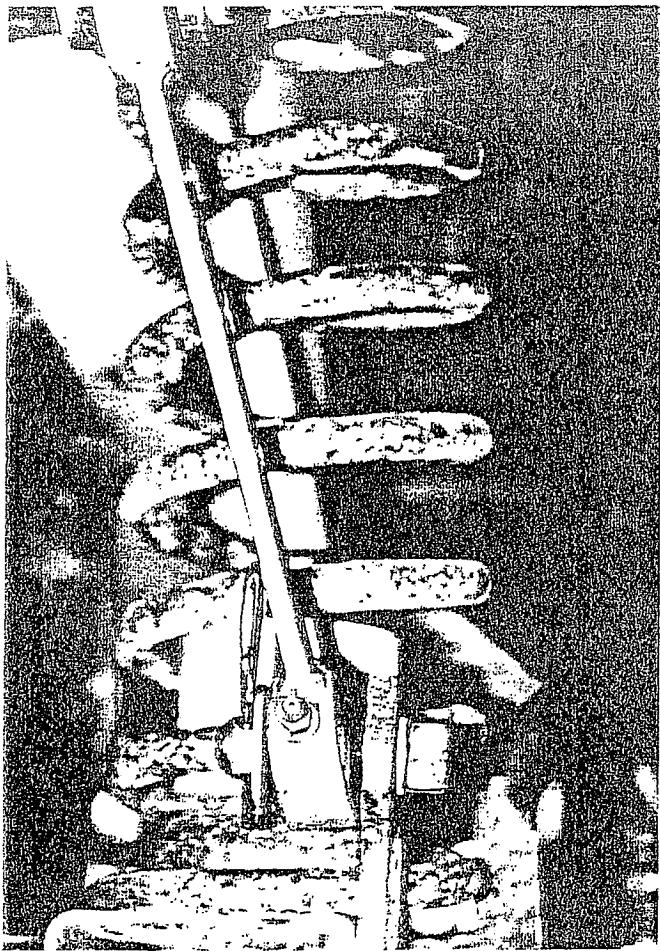


Photo # 5

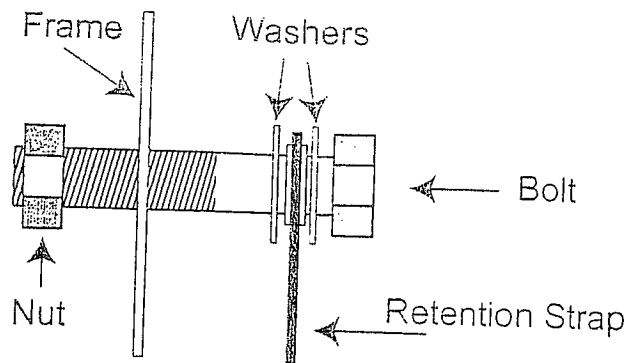


Photo # 7

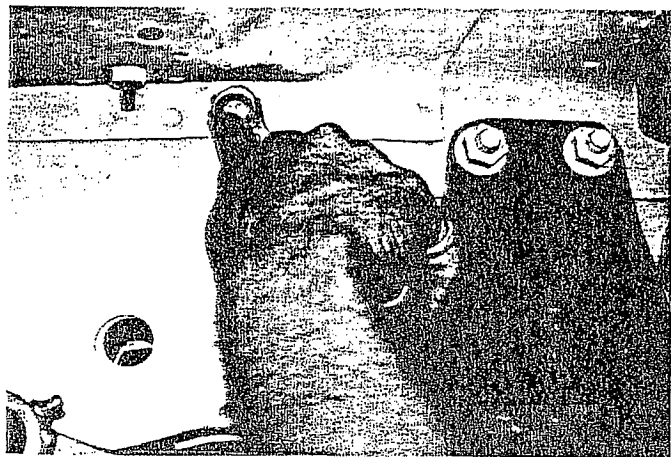


Photo # 8

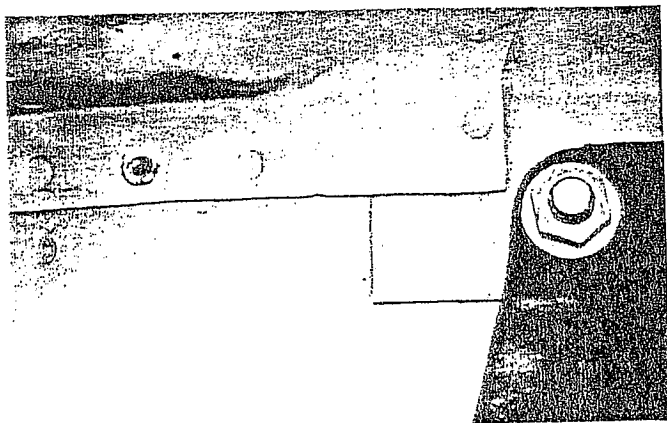


Photo # 6

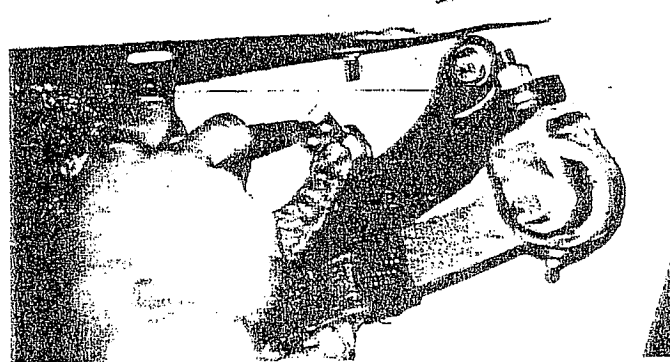


Photo # 9

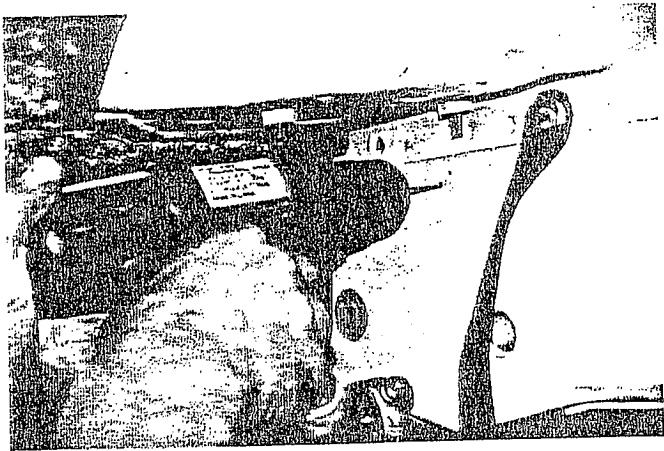


Photo # 10

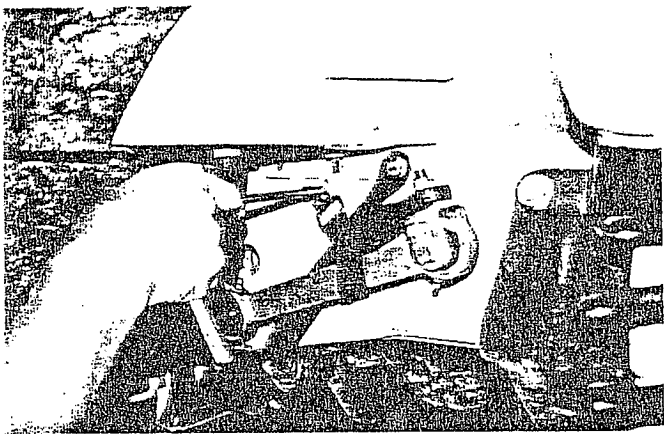


Photo # 11