



www.skyjacker.com

2007 - 2017 Jeep Wrangler JK 3.5" - 6" Rear Coil-Over Lift Installation Instructions

REQUIRED TOOL LIST:

- Safety Glasses
- Metric / Standard Sockets & Wrenches
- 5/16" & 6mm Hex Key Socket / Wrench
- Center Punch / Hammer
- Drill / 15/32" & 17/32" Drill Bits
- Cut Off Wheel
- Grinder
- Arbor Press
- Floor Jack
- Jack Stands
- Measuring Tape
- Torque Wrench



Before beginning the installation, thoroughly & completely read these instructions & the enclosed driver's WARNING NOTICE. Affix the WARNING decal in the passenger compartment in clear view of all occupants. Please refer to the Parts List to insure that all parts & hardware are received prior to the disassembly of the vehicle. If any parts or hardware are found to be missing, contact SKYJACKER® Customer Service at 318-388-0816 to obtain the needed items. If you have any questions or reservations about installing this product, contact SKYJACKER® Technical Assistance at 318-388-0816.

Park the vehicle on a level concrete or asphalt surface. Many times a vehicle is not level (side-to-side) from the factory & is usually not noticed until a lift kit has been installed, which makes the difference more visible. Using a measuring tape, measure the rear (both sides) from the ground up to the center of the fender opening above the axle. Record this information below for future reference.

Driver Side Rear: _____

Passenger Side Rear: _____

Important Notes:

- In the event of a need for different coil spring rate options, due to heavier weight, custom modifications, or etc. Please call SKYJACKER® Technical Assistance at 318-388-0816.
- A replacement rear dual cardan CV style drive shaft is **required** for 2 Door Models & **recommended** for 4 Door Models.
- Rear adjustable lower control arms are **recommended**. (Part # JKLL24R-SX)

- Rear adjustable upper control arms are **required**. (Part # JKULR26-SX)
- The **recommended** wheel back spacing is 4.5" or less.
- If larger tires (10% more than the OEM diameter) are installed, speedometer recalibration will be necessary. Contact your local Jeep dealer or an authorized dealer for details.

Component Box Breakdown:

Part # JK62RLS

Item #	Description	Qty	Item #	Description	Qty
SKY2026-S	PIGGY BACK COIL-OVER SHK	2	2.5X12X250	2.5X12X250 COIL-OVER SPRING	2
2.5X10X200	2.5X10X200 COIL-OVER SPRING	2	LSCOWRH-S	2.0 C/O SHK SPANNER WRENCH	1

Part #: JK42RLSB (4" Lift) / JK62RLSB (6" Lift)

Item #	Description	Qty	Item #	Description	Qty
JKLSBORDSL4-B	REAR DRV LWR C/O SHK BRKT (Included With JK42RLSB)	1	JK6RTB-B	REAR TRACK BAR BRKT (Included With JK62RLSB)	1
JKLSBORPSL4-B	REAR PAS LWR C/O SHK BRKT (Included With JK42RLSB)	1	JKBRC15-B	REAR TRACK BAR BRACE	1
JKLSBORDSL6-B	REAR DRV LWR C/O SHK BRKT (Included With JK62RLSB)	1	SBE504	REAR SWAY BAR END LKS	1
JKLSBORPSL6-B	REAR PAS LWR C/O SHK BRKT (Included With JK62RLSB)	1	JKRBL60	REAR BRAKE LINES	1
JKLSBORSB-1	REAR SWAY BAR RELOC BRKT	2	JK40RBS-S	REAR BUMP STOP BRKT	2
JKLSBORSB-2	REAR SWAY BAR SPACER BRKT	2	HB-JK40BSSR	HDWR BAG: BUMP STP SP	1
JKLSBORSU-1	REAR UPPER C/O SHOCK BRKT	2	HB-JK24RTB	HDWR BAG: TRK BAR BRKT	1
JKLSBORSU-2	REAR UPPER C/O TOP PLATE	2	HB-JKBRC15	HDWR BAG: TRK BAR BRC	1
JK24RTB-B	REAR TRACK BAR BRKT (Included With JK42RLSB)	1	HB-JKLSBORSB	HDWR BAG: SWAY BAR BR	1
			HB-JKLSBORSL	HDWR BAG: REAR LWR SH	1
			HB-JKLSBORSU	HDWR BAG: REAR UPR SH	1
			I-JKRLS	INST SHEET: JK42/62RLS	1

Part #: SBE504

Item #	Description	Qty	Item #	Description	Qty
SBE506-L	REAR, SWAY BAR END LK, SGL	2	HB-SBE504	HARDWARE BAG FOR SBE504	1

Part #: JKRBL60

Item #	Description	Qty	Item #	Description	Qty
JKBL60S	REAR BRAKE LINE	2	BTIE	RED BOOT TIE	2
BE15	BRAKE LINE BRACKET	2	HC1	HOSE HORSESHOE CLIP	2
3CCW	COPPER CRUSH WASHER	4	I-BL	INST SHEET: BRAKE LINES	1

Hardware Bag Breakdown:

Part # HB-SBE504

Item #	Description	Qty
HG58125	HOURGLASS 5/8" X 1.25" BUSH	4
403712	ES22 SLEEVE / 1.25" LONG	4
12X212BHCTB	1/2 X 2 1/2 BUTTON HEAD BOLT	4

Item #	Description	Qty
12SAEW	1/2 SAE WASHER	4
12USSW	1/2 USS WASHER	4
12CTN	1/2 COARSE THREAD LOCK NUT	4

Part #: HB-JK40BSSR

Item #	Description	Qty
516X1FTB	5/16 X 1 FINE THREAD BOLT	4
516FTN	5/16 FINE THREAD LOCK NUT	4

Item #	Description	Qty
516SAEW	5/16 SAE WASHER	4

Part #: HB-JK24RTB

Item #	Description	Qty
CS1625	CRUSH SLEEVE	1
12X114FTB	1/2 X 1 1/4 FINE THREAD BOLT	1
12FTN	1/2 FINE THREAD LOCK NUT	1
12SAEW	1/2 SAE WASHER	1
716X1FTB	7/16 X 1 FINE THREAD BOLT	1
716FTN	7/16 FINE THREAD LOCK NUT	1

Item #	Description	Qty
716SAEW	7/16 SAE WASHER	1
916X3FTB	9/16 X 3 FINE THREAD BOLT	1
916X312FTB	9/16 X 3 1/2 FINE THREAD BOLT	1
916FTN	9/16 FINE THREAD LOCK NUT	2
916SAEW	9/16 SAE WASHER	4

Part # HB-JKBRC15

Item #	Description	Qty
516X1CTB	5/16 X 1 COARSE THREAD BOLT	3
516XTFW	5/16 EXTRA THICK FLAT WASH	3

Item #	Description	Qty
516LW	5/16 LOCK WASHER	3

Part # HB-JKLSBORSB

Item #	Description	Qty
10MMX30MMB	10MM X 30MM METRIC BOLT	2
10MMX35FSB	10MM X 35MM FLAT SCKT BOLT	2
38SAEW	3/8 SAE WASHER	2

Item #	Description	Qty
716X112STUD	7/16 X 1 1/2 SERRATED STUD	4
716SAEW	7/16 SAE WASHER	4
716FTN	7/16 FINE THREAD LOCK NUT	4

Part # HB-JKLSBORSL

Item #	Description	Qty
38X1FTB	3/8 X 1 FINE THREAD BOLT	4
38SAEW	3/8 SAE WASHER	8
38FTN	3/8 FINE THREAD LOCK NUT	4
12X4FTB	1/2 X 4 FINE THREAD BOLT	2
12SAEW	1/2 SAE WASHER	4

Item #	Description	Qty
12FTN	1/2 FINE THREAD LOCK NUT	2
14X110MMB	14MM X 110MM METRIC BOLT	2
916SAEW	9/16 SAE WASHER	4
14MMN	14MM METRIC LOCK NUT	2

Part # HB-JKLSBORSU

Item #	Description	Qty
10X45MMB	10MM X 45MM METRIC BOLT	4
38SAEW	3/8 SAE WASHER	4
10MMN	10MM METRIC LOCK NUT	4

Item #	Description	Qty
12X234FTB	1/2 X 2 3/4 FINE TRHEAD BOLT	2
12SAEW	1/2 SAE WASHER	4
12FTN	1/2 FINE THREAD LOCK NUT	2

Optional Jeep JK Coil-Over Items: (Sold Separately)



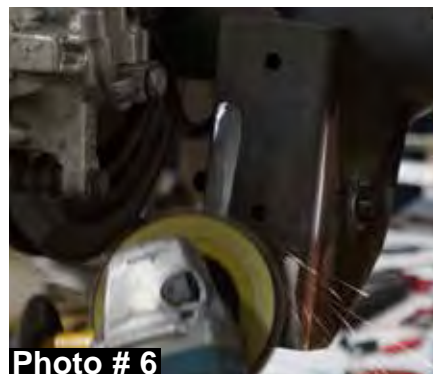
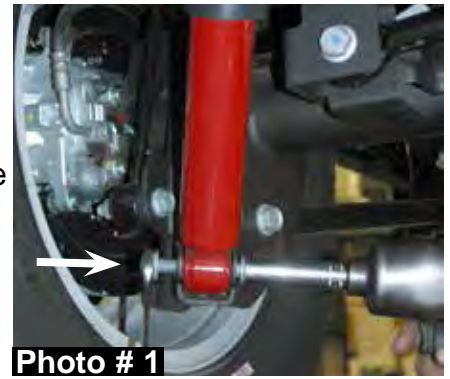
Part # JKLSAB / Front Air Bump Stop Kit



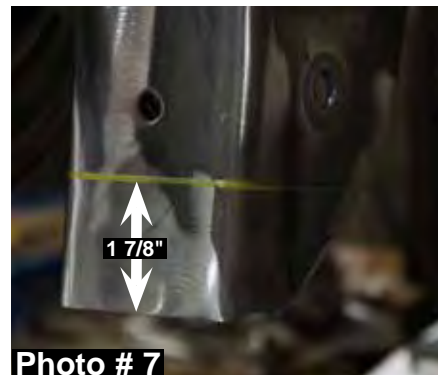
Part # JK62FLSBO 3.5" - 6"
Front Coil-Over Kit

Installation:

1. With the vehicle on flat level ground, block the front tires / wheels.
2. Raise the rear of the vehicle using a floor jack & support the frame rails using jack stands.
3. Support the rear differential using a floor jack & remove the rear tires / wheels.
4. Remove the OEM rear shocks using a 16mm socket / wrench & 18mm socket / wrench. (See Photo # 1)
5. Disconnect the OEM rear track bar from the rear differential using a 21mm socket / wrench. (See Photo # 2)
6. Remove the OEM rear sway bar end links using a 18mm socket / wrench & 19mm socket / wrench.
7. Disconnect the OEM ABS lines & brake lines from the frame using a 10mm socket / wrench. (See Photo # 3)
8. Lower the rear differential & remove the OEM rear coil springs.
9. One side at a time, remove the rear lower control arms using a 21mm socket / wrench & remove the OEM lower shock brackets from the rear differential using a cut off wheel or similar tool. (See Photo # 4)
10. Remove the OEM lower sway bar end link brackets from the rear differential using a cut off wheel or similar tool. (See Photo # 5)
11. Clean up any imperfections & round any sharp edges using a grinder or similar tool. (See Photo # 6)



12. Measure up 1 7/8" from the bottom rear of the OEM lower control arm brackets & draw a line straight across the rear & sides of each OEM lower control arm bracket. (See Photo # 7)



13. Cut along the straight line drawn across the OEM lower control arm brackets using a cut off wheel or similar tool.

14. Measure from the lower front corners of the OEM lower control arm brackets up & over 1" & draw a diagonal line across the lower front corners of each OEM lower control arm bracket. (See Photo # 8)



15. Cut along the diagonal lines drawn across the front corners of the OEM lower control arm brackets using a cut off wheel or similar tool.

16. Clean up any imperfections & round any sharp edges of the previously cut areas using a grinder or similar tool.

17. Prime / paint all raw metal exposed from removing the OEM lower shock mounts, OEM lower sway bar end link brackets, & part of the OEM lower control arm brackets.



18. Install the new Skyjacker lower coil-over shock brackets to the OEM lower control arm brackets using the supplied 14mm x 110mm bolts, 3/8" x 1" fine thread bolts, washers, nuts, & a 9/16" socket / wrench. **Note:** Do not tighten the the 14mm x 110mm bolts at this time. (See Photo # 9)

19. Install the OEM lower control arms to the frame & new Skyjacker lower coil-over shock brackets using the OEM hardware at the frame & a 21mm socket / wrench. At the new lower coil-over shock brackets use the supplied 14mm x 110mm bolts, washers, nuts, & a 22mm socket / wrench. (See Photo # 10)



20. Install the new Skyjacker upper coil-over shock top plate brackets over the OEM upper shock brackets weld nuts. (See Photo # 11) **Note:** Some models will require the new Skyjacker upper coil-over shock top plate brackets to be cut 1/2" for body clearance.



21. If required, measure up 1/2" from the straight edge of the new Skyjacker upper coil-over shock top plate brackets & draw a line straight across each new upper coil-over shock top plate bracket. (See Photo # 12)

22. Cut along the straight line drawn across the new Skyjacker upper coil-over shock top plate brackets using a cut off wheel or similar tool. (See Photo # 12)

23. Clean up any imperfections & round any sharp edges of the previously cut areas using a grinder or similar tool.

24. Prime / paint all raw metal exposed from removing the 1/2" of material from the new Skyjacker upper coil-over shock top plate brackets.

25. Install the new Skyjacker upper coil-over shock mounting brackets to the OEM upper shock brackets with the longer straight edge toward the rear of the vehicle using the supplied 10mm x 45mm bolts, washers, & a 17mm socket / wrench.

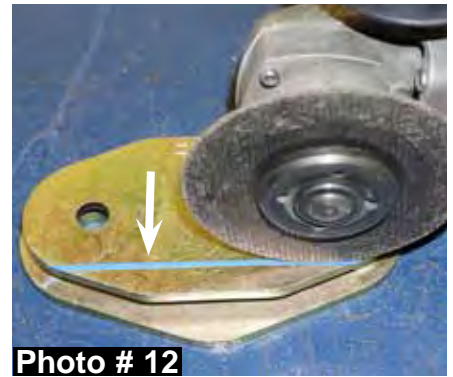
Note: Do not tighten at this time. (See Photo # 13)

26. Install the supplied 10mm nuts to the new 10mm x 45mm bolts & tighten all upper coil-over mounting bracket hardware using a 17mm socket / wrench. (See Photo # 14)

27. Place the new Skyjacker rear track bar relocation bracket over the OEM track bar bracket on the rear differential. With the new rear track bar bracket seated flush, clamp the new bracket in place, mark with a center punch, & drill the new center mounting hole using a 15/32" drill bit. (See Photo # 15)

28. Once drilled, install the supplied 7/16" x 1" fine thread bolt, washer, & nut using a 5/8" socket / wrench. (See Photo # 15)

29. Mark, center punch, & drill through the driver side bottom of the OEM track bar bracket & through the new Skyjacker track bar bracket using a 17/32" drill bit. Install the supplied 1/2" x 1 1/4" fine thread bolt, washer, & nut using a 3/4" socket / wrench. (See Photo # 16)



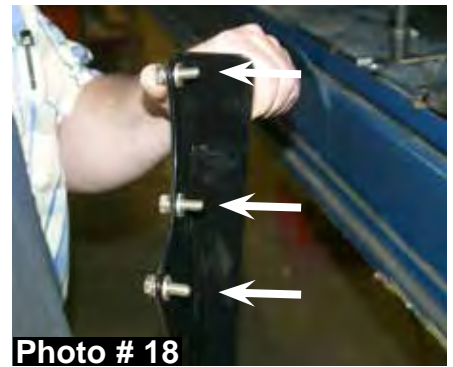
30. Install the supplied crush sleeve, 9/16" x 3 1/2" bolt, washers, & nut at the lower mounting location of the new Skyjacker track bar bracket using a 13/16" socket / wrench. (See Photo # 16)

31. Remove the three OEM upper left rear differential cover bolts using a 1/2" socket / wrench. (See Photo # 17)

32. Attach the new Skyjacker track bar brace to the rear differential using the supplied 5/16" x 1" coarse thread bolts, extra thick flat washers, lock washers, & a 1/2" socket / wrench. **Note:** Use the extra thick flat washers between the new track bar brace & the rear differential cover. Use the lock washers under the head of each 5/16" bolt. Do not tighten at this time. (See Photo # 18 & # 19)

33. Install the new Skyjacker rear bump stop brackets to the OEM location on the rear differential using the supplied 5/16" x 1" fine thread bolts, washers, nuts, & a 1/2" socket / wrench. **Note:** Install the new bump stop brackets so the angled end is towards the rear of the vehicle. (See Photo # 20)

34. Install the new Skyjacker coil-over shocks to the new Skyjacker upper coil-over shock mounting brackets using the supplied metal bushings, 1/2" x 2 3/4" fine thread bolts, washers, nuts, & a 3/4" socket / wrench. (See Photo # 21) **Note:** The reservoir of the new coil-over shocks may need to be rotated for clearance purposes. If so, use two 5/32" punches or similar tools to slightly loosen the reservoir spanner nut & rotate as necessary. Once rotated, tighten the reservoir spanner nut using two 5/32" punches or similar tools. (See Photo # 22)



35. Install the new Skyjacker coil-over shocks to the new Skyjacker lower coil-over shock mounting brackets using the supplied metal bushings, 1/2" x 4" fine thread bolts, washers, nuts, & a 3/4" socket / wrench. (See Photo # 23)



36. Lubricate the rubber OEM exhaust hangers & remove the muffler assembly using a 15mm socket /wrench.

37. Remove the OEM sway bar from the frame using a 16mm socket / wrench. (See Photo # 24)



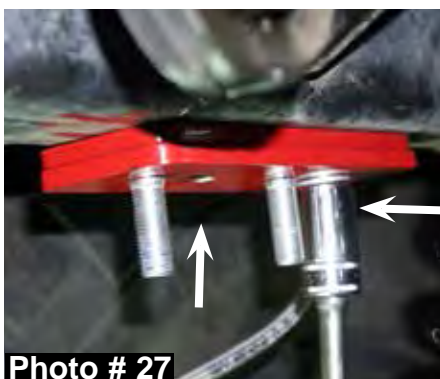
38. Install the new Skyjacker 7/16" x 1 1/2" studs into the new Skyjacker sway bar relocation brackets with the threads of the new 7/16" x 1 1/2" studs & tapered hole facing outward using an arbor press or similar tool. (See Photo # 25)

39. Combine the new Skyjacker rear sway bar relocation brackets & new Skyjacker rear sway bar spacer brackets together by aligning the stud heads with the matching holes. (See Photo # 26)

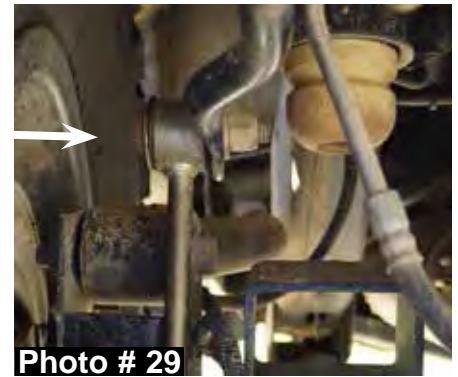


40. Install the the new Skyjacker rear sway bar relocation bracket & new Skyjacker rear sway bar spacer bracket assemblies to the frame using the supplied 10mm x 30mm bolts, washers, 10mm x 35mm socket head bolts, a 6mm hex key socket / wrench, & a 17mm socket / wrench. (See Photo # 27)

41. Install the OEM sway bar to the new Skyjacker rear sway bar relocation bracket & new Skyjacker rear sway bar spacer bracket assemblies using the supplied 7/16" fine thread nuts, washers, & a 5/8" socket / wrench. (See Photo # 28)



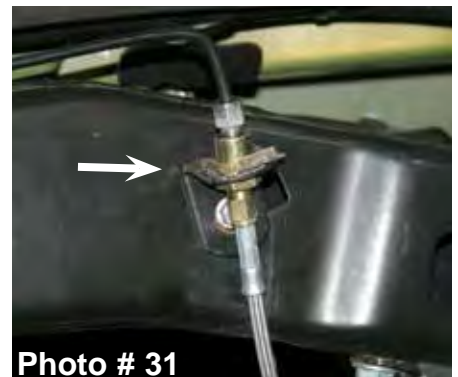
42. Install the new Skyjacker rear sway bar end links using the supplied bushings, steel sleeves, 1/2" x 2 1/2" button head bolts, SAE washers, USS washers, nuts, a 5/16" hex key, & a 3/4" socket / wrench. **Note:** The upper end link bolt will need to be installed from the outside in for wheel clearance. Use the larger USS washer under the head of each bolt & the smaller SAE washer under each nut. (See Photo # 29)



43. Attach the OEM rear track bar & the end of the new Skyjacker track bar brace to the upper mounting location of the new Skyjacker track bar bracket using the supplied 9/16" x 3" fine thread bolt, washers, & nut. Tighten the supplied 5/16" bolts at the rear differential using a 1/2" socket / wrench & the supplied 9/16" x 3" bolt on the track bar using a 13/16" socket / wrench. (See Photo # 30)



44. Remove the OEM rear brake lines & install the new Skyjacker brake lines to the OEM location on the frame using the supplied 90 degree brackets, horseshoe clips, copper crush washers, OEM hardware, & a 10mm socket / wrench. **Note:** Once installed, the brake system must be bled to operate properly. (See Photo # 31)



45. Install the muffler assembly using a 15mm socket / wrench.

46. Install the rear tires / wheels & lower the vehicle to the ground.

Final Notes:

- After the installation is complete, double check that all nuts & bolts are tight. Refer to the following chart for the proper torque specifications. (Do not retighten the nuts & bolts where thread lock compound was used.)
- With the vehicle placed on the ground, cycle the steering lock to lock & inspect the steering, suspension, brake lines, front & rear drivelines, fuel lines, & wiring harnesses for proper operation, tightness, & adequate clearance.
- After the first 100 miles, check all hardware for the proper torque & periodically thereafter.

TORQUE SPECIFICATIONS

<u>INCH SYSTEM</u>			<u>METRIC SYSTEM</u>		
Bolt Size	Grade 5	Grade 8	Bolt Size	Class 8.8	Class 10.9
5/16	15 FT LB	20 FT LB	6MM	5 FT LB	9 FT LB
3/8	30 FT LB	35 FT LB	8MM	18 FT LB	23 FT LB
7/16	45 FT LB	60 FT LB	10MM	32 FT LB	45 FT LB
1/2	65 FT LB	90 FT LB	12MM	55 FT LB	75 FT LB
9/16	95 FT LB	130 FTLB	14MM	85 FT LB	120 FT LB
5/8	135 FT LB	175 FT LB	16MM	130 FT LB	165 FT LB
3/4	185 FT LB	280 FT LB	18MM	170 FT LB	240 FT LB

- The above specifications are not to be used when the bolt is being installed with a bushing.

Seat Belts Save Lives, Please Wear Your Seat Belt!



Jesus Christ Died For You.

John 3:16

For God so loved the world that He gave His only Son, so that everyone who believes in Him should not perish, but have everlasting life.
Romans 3:23

For all have sinned; all fall short of God's glorious standard.
Ephesians 2:8

God saved you by his special favor when you believed. And you can't take credit for this; it is a gift from God.
Psalms 18:2

The Lord is my Rock, my fortress, and my savior; my God is my Rock, in whom I find protection. He is my shield, the strength of my salvation, and my stronghold.
Romans 10:9-10

That if you shall confess with thy mouth the Lord Jesus, and shall believe in your heart that God hath raised him from the dead, you shall be saved. For with the heart man believeth unto righteousness; and with the mouth confession is made unto salvation.

Pray This Simple Prayer:

God, I come to You admitting I have sinned against You and I need you to take control of my life. The Bible says anyone who calls on the name of the Lord will be saved. I am calling on You, Jesus. I ask that You come live in my heart and be the Lord over my life today. I do believe You died on the cross for me and came back to life to give me life! Thank You, Lord Jesus for a new life in You!

Now, go and tell somebody about your new life in Jesus, get a Bible, begin to read it, and go to a Bible believing church.

If you would like someone to pray with you, call Kenneth Copeland Ministries anytime at 800-600-7395.

To listen to commercial free Christian radio on the web, go to www.887fm.org

Jesús murió por ti.

Juan 3:16

"Porque tanto amó Dios al mundo, que dio a su Hijo unigénito, para que todo el que cree en él no se pierda, sino que tenga vida eterna."
Romanos 3:23

"Pues todos han pecado y están privados de la gloria de Dios."
Efesios 2:8

"Porque por gracia ustedes han sido salvados mediante la fe; esto no procede de ustedes, sino que es el regalo de Dios."
Salmos 18:2

"El Señor es mi roca, mi amparo, mi libertador; es mi Dios, el peñasco en que me refugio. Es mi escudo, el poder que me salva, ¡mi más alto escondite!"
Romanos 10:9-10

"9 Que si confi esas con tu boca que Jesús es el Señor, y crees en tu corazón que Dios lo levantó de entre los muertos, serás salvo. 10 Porque con el corazón se cree para ser justificado, pero con la boca se confiesa para ser salvo."

Ahora dí esta simple oración:

Dios, vengo a Ti y admito que he pecado contra Ti, necesito que tomes el control de mi vida. La Biblia dice que todo aquel que invoca el nombre del Señor escapará con vida. En este momento yo clamo ante Ti, Jesús; te pido que vengas a vivir en mi corazón y que tomes el control de mi vida. ¡Yo creo que tu moriste en la cruz y resucitaste para darme vida! ¡Gracias Señor Jesús, por una nueva vida que tengo en Ti! Amen.

Ahora ve y dile a alguien sobre la nueva vida que tienes en Cristo. Compra una Biblia y empieza a leerla. Busca una Iglesia que cree en la Biblia y hazte parte de esa Iglesia.

Si te gustaría orar con alguien, puedes llamar a este número 800-600-7395

Puedes ir a este sitio de Internet para escuchar música Cristiana sin anuncios, www.887fm.org

Check out our favorite ministries at:
www.inministries.org
www.familychurch.org
www.kcm.org

